



EQ8

QUICK START GUIDE

1

Claim Your Purchase*

Go to: <http://electricquilt.com/claim-eq8>

Complete the checkout process to access the download.

2

Download the File

Save the file to your computer. By default, most files will download into your Downloads folder.

3

Install the Software

Double-click the file to start the installation. Follow the prompts to complete the installation.

4

Activate

This final process tells EQ's server to activate (or turn on) EQ8 on your computer.

See page 9 to locate
your License ID and
Password.

EQ8 License ID and Password

Detailed instructions can be found inside this booklet.

*This booklet comes with any physical copy (retail box) of EQ8. Customers who purchased the download directly from ElectricQuilt.com can skip page 4. The "Claim" process is only relevant to customers who purchased a physical copy of EQ8.



Thank you...

Thank you for your purchase of the EQ8 software. This guide offers step-by-step instructions for downloading and installing your purchase.

How This Works

The License ID and Password found on the front of this booklet will allow you to download the software from the EQ website. Once your license has been verified on our server, you will complete the checkout process as if you are purchasing the product for the first time.

Since you've already purchased EQ8, **your** cost during checkout will be \$0.00. Completing the checkout process adds your EQ8 download and license information to your ElectricQuilt.com account so you can access it in the future.

During the checkout process, you will be asked to create an account, if you do not already have one. Record your account credentials here:

My ElectricQuilt.com Account

Email address: _____

Password: _____

(When creating your account, do not use the EQ8 password listed on the front of this booklet. **The password above is for your EQ website account only.** It should be something you can remember.)



TABLE OF CONTENTS

INSTALLATION GUIDE

Step 1: Claim Your Purchase	4
Step 2: Download the File	5
Step 3: Install the Software	6
Step 4: Activate.....	8
Your License ID and Password	9
Deactivation and Validation	9
Uninstall the Software	11
Learn and Get Help.....	12
Add to Your Software.....	14

LESSON

EQ8 Starter Lesson	15
--------------------------	----

QUICK TIPS

About the Home Screen	22
The EQ8 Worktables	23
Workspace Diagram	24
Making Workspace Adjustments.....	26
Creating Your Own Default Project.....	27
Opening Quick Quilt Projects	28
Printing Patterns from a Quilt.....	29
Understanding the Block Colorings	30
Understanding Layers.....	31
Block Drawing Styles	32
Using the Zoom Tools	35
Keyboard Shortcuts	36

TOOL REFERENCE

Quilt Worktable	38
Block Worktable	42
Image Worktable	44


STEP 1: CLAIM YOUR PURCHASE


Follow these instructions to claim your EQ8 download. Since you have already purchased EQ8, **your** cost during checkout will be \$0.00. Completing the checkout process adds your EQ8 download and license information to your ElectricQuilt.com account so you can access it in the future. If you do not already have an account on our website, you will be prompted to create one during the checkout process.

1. Go to <http://electricquilt.com/claim-eq8>
2. Select your computer platform: **Mac or PC**
3. Enter the **License ID** and **Password** found on the front of this booklet.
4. Click **Verify My License**.

Note! If you are upgrading from EQ7, you will be asked to also enter your EQ7 License ID and Password at this point. After providing your EQ7 information, click *Verify My License* again to continue.

Step 2

 Mac Download (\$0.00)

 PC Download (\$0.00)

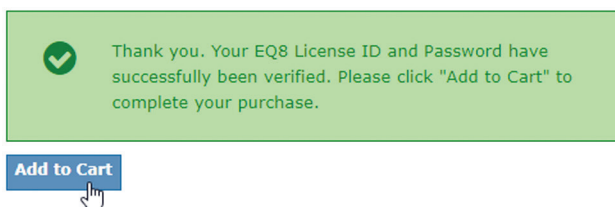
Price: \$0.00

EQ8 License ID

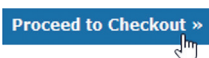
EQ8 Password

Step 4 — [Verify My License](#)

5. Once your license is verified, click **Add to Cart**. The EQ8 software will appear in the Cart with a price of \$0.00.



6. Click **Proceed to Checkout** and **complete the checkout process**. Follow the prompts to create an account if you don't have one already. When the checkout is complete, you will see a thank-you page and receive a confirmation email.



You will need to create an account on the Electric Quilt website to download the software. Once you have an account, you will always be able to come back to the website to download the software when you buy a new computer or simply need to reinstall.

STEP 2: DOWNLOAD THE FILE

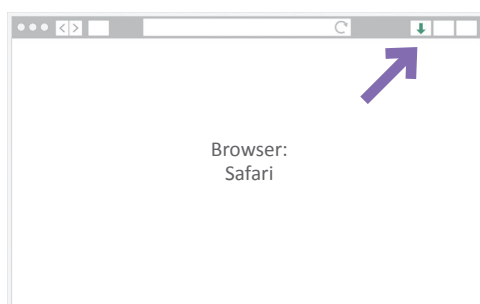
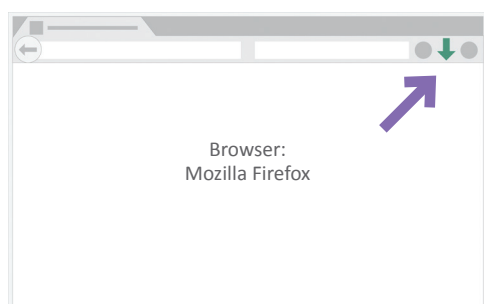
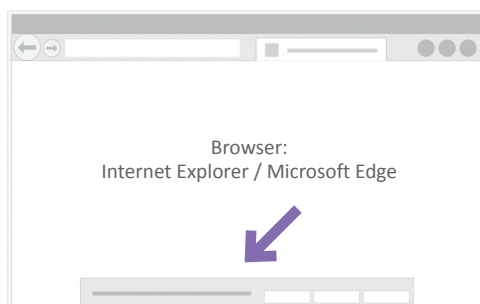
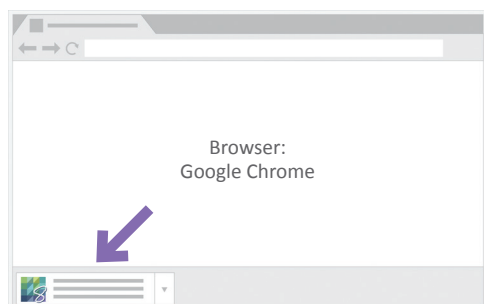
Once the checkout process is complete, you will see a Download button just above your License ID and Password on your order confirmation page, as well as in your email receipt. Click the **Download** button to download the EQ8 installer file.

Items Ordered
EQ8 - Claim Product Download – PC, Download
Download
EQ8 License ID: [REDACTED]
EQ8 Password: [REDACTED]

How do I find my download?

After you click the Download button, your browser may ask to save the file. Every browser handles downloads differently. Refer to the diagrams below to know how to access your file.

If given the option, save the file in an easy-to-find place. If not asked where to save, the file should automatically save into your **Downloads folder**. Wait for your download to complete before moving on to the next step. Downloading may take a bit of time because the file is large.



Do I have to download the file right away?

No, you do not. Once you've completed the checkout (step 1), your download will always be in your ElectricQuilt.com account to access later.

When you're ready to download your product, simply log into your **ElectricQuilt.com account**, click on **My Downloads** and click the file to start the download.

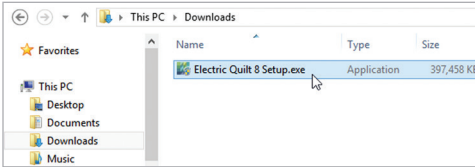
STEP 3: INSTALL THE SOFTWARE

It's time to install your EQ8 software! Follow the instructions appropriate for your computer platform (Windows or Mac). Be sure you have completed steps 1 and 2 on the previous pages first.

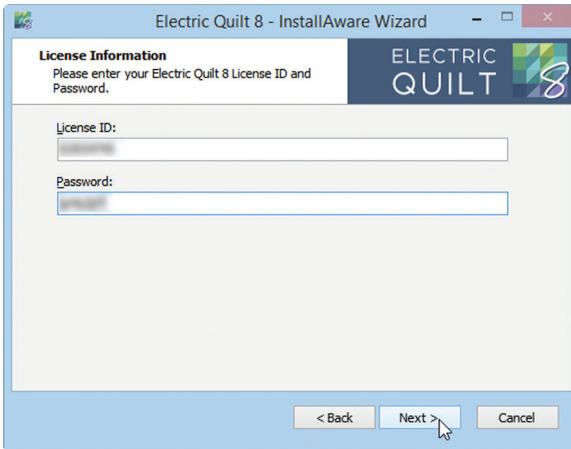


Windows® - Electric Quilt 8 Setup.exe

1. Find the **Electric Quilt 8 Setup.exe** file in your Downloads folder. (Or wherever you saved it when you downloaded the file on page 5.)
2. Double-click the **Electric Quilt 8 Setup.exe** file to start the installation.



3. Follow the prompts through the installation.



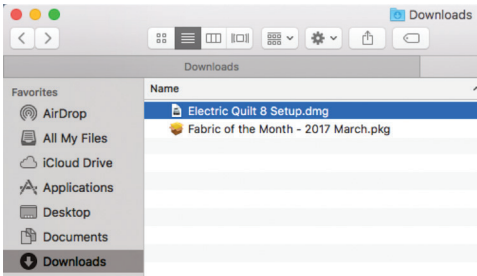
4. When the installation is finished, you may be asked to Activate your software. Read more about Activation on page 8.

STEP 3: CONTINUED...

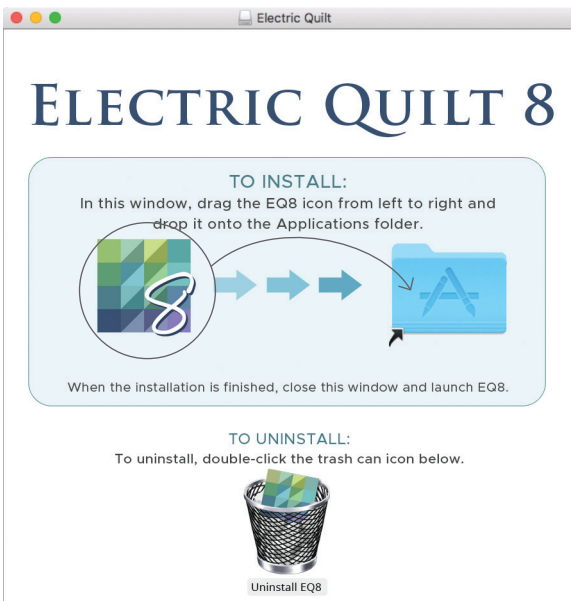


Mac® - Electric Quilt 8 Setup.dmg

1. Find the **Electric Quilt 8 Setup.dmg** file in your Downloads folder. (Or wherever you saved it when you downloaded the file on page 5.)
2. Double-click the **Electric Quilt 8 Setup.dmg** file to view the install window.



3. In the install window, **drag the EQ8 icon from left to right and drop it onto the Applications icon**. You'll see a box that says, "Copying" indicating that the installation process has begun.



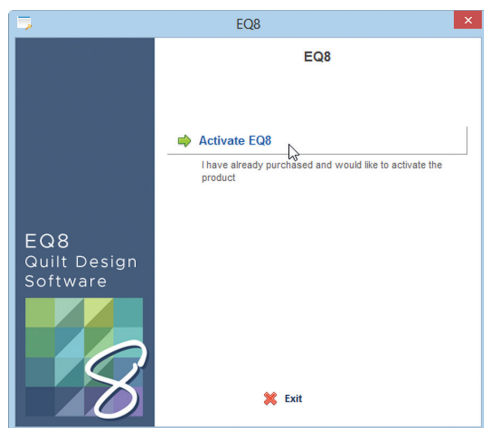
4. When the installation is finished, close the install window. Find the EQ8 icon in Launch Pad or in your Applications folder. **Double-click to start EQ8**. You may be asked to Activate your software. Read more about Activation on page 8.

STEP 4: ACTIVATE

Although your EQ8 may be installed, it's not "turned on" until it completes the activation process. Activation sends a signal to EQ's server to verify that the software is licensed to you and that it has not been shared or stolen.

Windows® users: If your computer is connected to the internet during installation, you may not even realize that your EQ8 was activated. **Activation happens silently behind the scenes for most Windows® users. If you are able to open and use the EQ8 software, then you are successfully activated.** If you attempt to open EQ8 and you see the Activation screen, then activation did not happen during installation.

1. Double-click the **EQ8 icon** to open EQ8.
2. Click the **Activate EQ8** button.
3. Enter your **License ID** and **Password** (found on the front of this booklet). Click **Continue** to activate the software.
4. Click **Continue** again to open EQ8.



Step 2



Steps 3-4

If you receive an error code, check your internet connection and firewall/anti-virus protection and try again. Activation may have been blocked for a few reasons.

- **Error 5008:** You did not type the License ID and Password correctly
- **Could not communicate with server:** You are not connected to the internet, or you have a firewall or anti-virus blocking the signal to EQ's server

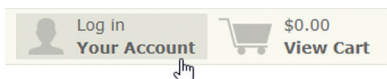
Contact Technical Support if you continue to have issues activating. You can check our Support website, call 1-419-352-1134 or use our live chat during business hours, or email TechSupport@ElectricQuilt.com.

YOUR LICENSE ID AND PASSWORD

Your License ID and Password are located on the front of this booklet. After you complete the steps for claiming your purchase (page 4), your License ID and Password will be added to your EQ account. Don't worry if you lose this booklet. As long as you have completed those steps, you will always be able to access your license information.

To find your License ID and Password:

1. Go to **ElectricQuilt.com**.
2. Log into your account.



3. Choose **My Downloads** and locate your EQ8 download. Your License ID and Password will be listed next to your download. You can also find your License ID and Password in your original email receipt.

Product	Order #	Download
EQ8 - Claim Product Download - PC, Download	133258	Download File
EQ8 License ID: [REDACTED]	Aug 10, 2017	
EQ8 Password: [REDACTED]		

DEACTIVATION AND VALIDATION

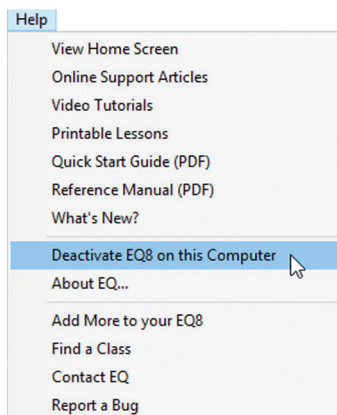
You will need to deactivate your EQ8 software in the following cases:

- You are getting rid of an old computer
- You want to use EQ8 on more than 2 computers

To Deactivate EQ8

When uninstalling on a Windows® computer, deactivation should happen automatically as long as your computer is connected to the internet. Otherwise, you can deactivate manually by following these steps:

1. Open **EQ8**.
2. On the top menu, click **Help > Deactivate EQ8 on this Computer**.
3. Click **Yes** to the "Are you sure?" prompt.
4. Click **OK**.



On how many computers can I have EQ8 installed at a time?

You can have EQ8 installed on as many computers as you wish, however only **2 computers** can be activated at a time. If you want to use EQ8 on a 3rd computer, you must deactivate one of the computers (following the steps on page 9) before activating the 3rd computer.

Please note: You do NOT need to uninstall EQ8 unless you no longer plan to use it on that computer.



Computer 1 activated



Computer 2 deactivated



Computer 3 activated

What is Validation?

Now that you've activated EQ8, your computer can be disconnected from the internet, if you prefer.

Validation is required every 60 days. Validation is a signal that gets sent from your EQ8 to our server letting us know that you are using a valid license. If you are disconnected from the internet for an extended amount of time, you will receive a warning message letting you know you have XX days left to validate your software.

If you receive this message, simply connect your computer to the internet, then open your EQ8 software.

If you are disconnected from the internet for longer than 60 days, EQ8 will require that you re-activate the software. Follow the steps on page 8 to activate.

Taking a Class?

If you are taking a class, it's very important that you connect your laptop to the internet and open EQ8 so the license can be validated ***before you go to class***. Oftentimes the classrooms may not have internet access, so it's important that you do this before class.

Looking for a class? See page 13.

UNINSTALL THE SOFTWARE

Uninstalling on Windows®

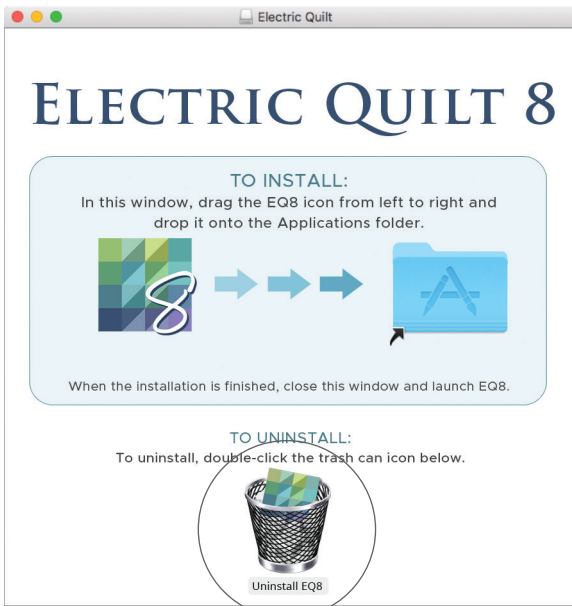
If your computer is connected to the internet, EQ8 will automatically be deactivated when uninstalling. If it is not connected to the internet, you must connect to the internet, then deactivate EQ8 before uninstalling. See page 9.

1. **Windows 7-8.1:** Open **Control Panel** and choose **Programs and Features**.
Windows 10: Click the **Windows** icon in the bottom-left corner. Click **Settings** (gear icon), then choose **Apps**.
2. Find and select **EQ8** from the list.
3. Click the **Uninstall** button. Follow the prompts to uninstall.

Uninstalling on Mac®

Before uninstalling, you must connect to the internet, then deactivate EQ8. See page 9.

1. If you still have the original install file on your computer (**Electric Quilt 8 Setup.dmg**), continue to the next step.
If you no longer have the DMG file on your computer, go to **ElectricQuilt.com**, **log into your account**, choose **My Downloads** and **re-download EQ8**.
2. Find the **Electric Quilt 8 Setup.dmg** file on your computer and double-click to open it.
3. **Double-click the trash can** at the bottom of the install window. EQ8 will uninstall from your computer.



LEARN AND GET HELP

Find Help Within EQ8

EQ8 is packed with online resources for learning your EQ8 software. To access most of these resources, click the **Help** option on the top menu to display the menu below.

View Home Screen

Display the Home Screen for quick access to features, help resources and product details.

Online Support Articles

Use the search feature on the EQ support site to find the answers you're looking for.

Tutorial Videos

These videos are a great way to get started. Watch and learn!

Printable Lessons

There are fully-illustrated printable lessons to help you get started.

Quick Start Guide (PDF)

Need an online version of this booklet? The lesson and tips in the next sections can be downloaded as a PDF.

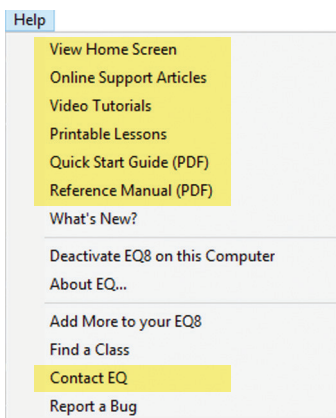
Reference Manual (PDF)

The Reference Manual is a reference guide to all the features of the program. View the PDF and print out the pages that are most useful. Check the EQ website for information on purchasing a hard copy of the manual.

Contact EQ

Can't find the answers you need? Contact the EQ technical support team by live chat, email, or phone. Emails are answered within 1-2 business days, and live chats and phone calls can be taken during business hours. (Monday-Friday, 9:00am-4:30pm ET.)

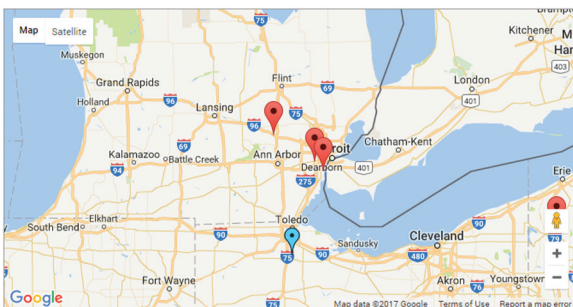
- Find answers on our Support Site: Support.ElectricQuilt.com
- Contact by email: TechSupport@ElectricQuilt.com
- Live chat with EQ: ElectricQuilt.com
- Get help by phone: 1-419-352-1134



Find an EQ Class

Look for hands-on EQ classes in your area. Enter your location in our class locator to find classes near you. Go to **ElectricQuilt.com**, click on **Classes > Find a Local Class**.

Are you hosting an EQ class? Let us know! We are happy to post your class on our website to help our customers find your class or workshop.



There are also many online-class options available. Go to **ElectricQuilt.com**, click on **Classes > Online Classes** to see a list of online class opportunities.

Online classes are an easy and affordable way to take a class. Sit in front of your computer in the comfort of your own home and work through the class at your own pace.

EQ Academy

EQ Academy is a hands-on EQ workshop near Toledo, OH. Started in 2015, students from across the United States and Canada travel to learn their EQ software from experienced instructors. Hosted by The Electric Quilt Company, members of the EQ staff are in each classroom to give individual help to students so the teacher can continue to move forward with her lessons. Class selections range from beginner level to advanced, each covering the basics all the way to the most custom features in EQ!



Check **ElectricQuilt.com** to see when you can sign up for the next EQ Academy!



Kari Schell helping a student at EQ Academy.



Mary Ellen Kranz teaching a beginner class at EQ Academy.

ADD TO YOUR SOFTWARE

EQ8 comes with over 6,250 fabrics and over 6,700 blocks in the libraries, but you can add so much more! There are lots of free downloads, plus additional libraries available for purchase. Check out **ElectricQuilt.com** to add to your software!

Purchase Add-Ons

The Electric Quilt website has many block, fabric, and quilt products to add more to your EQ8 software. The contents of these add-ons can be used to enhance your design process. Download and install these add-on products to use with your EQ8 software today!

- Block library add-ons
- Quilt project add-ons
- Digital fabric library add-ons



Free Downloads

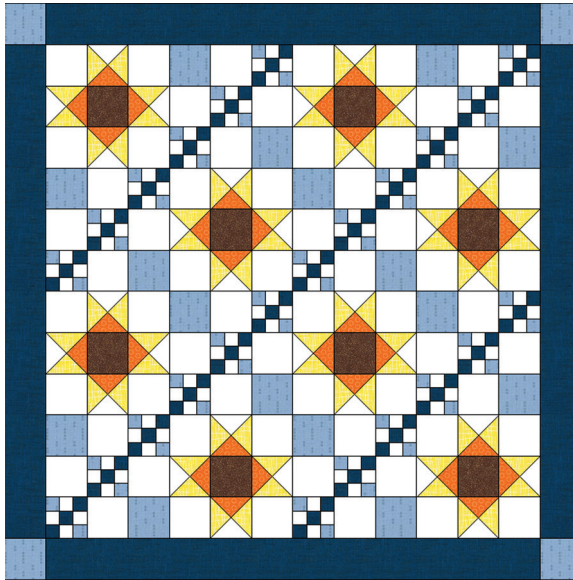
Each month we release a free quilt project and a free fabric library for you to download and use with your EQ software! Plus there's a huge archive of past downloads! Watch our blog for free tutorials and tips for using your EQ8 software as well. Be sure you're on our email list to get reminders of these free additions.

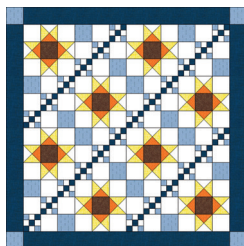




EQ8 STARTER LESSON

If you're new to EQ software, this starter lesson is the easiest place to begin. Its quick and easy steps take you through designing a very basic quilt, to give you a taste for what the software can do.





EQ8 STARTER LESSON

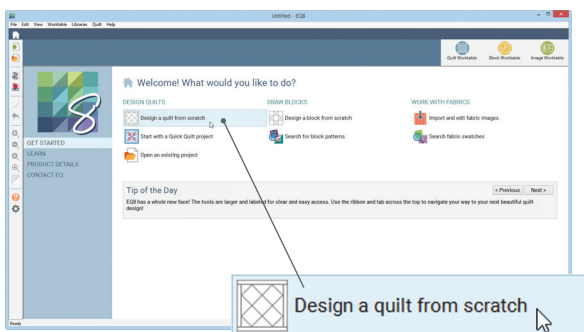
This is a quick lesson to jump start your learning. This lesson will cover a very basic quilt design using the default blocks and fabrics, several of the different coloring tools and pattern printing.

Find more lessons online and in the add-on lesson books for EQ8.

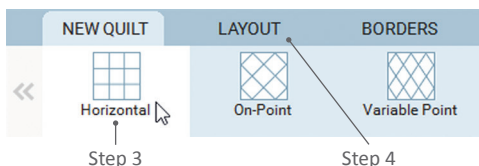
1. Open EQ8.
2. On the Home Screen, click **Design a quilt from scratch**.
3. On the **NEW QUILT** tab, choose **Horizontal** Layout by clicking on the option on the blue ribbon.
4. Click the **LAYOUT** tab.
5. Let's change the finished block size to 6" x 6". Put a check next to **Keep width and height equal**. Click and drag a slider bar to the left until the numbers get to **6.000**. Or, you can simply type the numbers in both the boxes.

Leave the Number of Blocks and the Sashing options as they are.

6. Click the **BORDERS** tab. On the top ribbon, change the current border style to **Corner Blocks** by clicking directly on the Corner Blocks option.
7. The border is currently 1 inch around the quilt. With **All** checked, move one of the slider bars to the right to change this to a **2 inch border**.

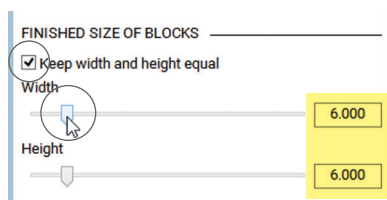


Step 2

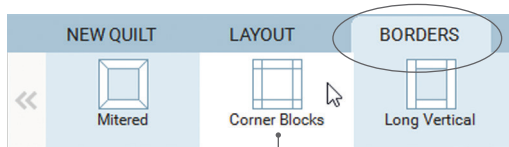


Step 3

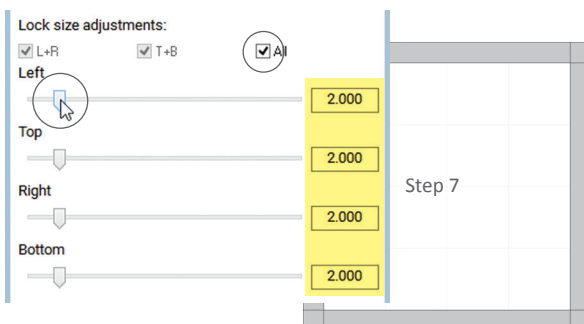
Step 4



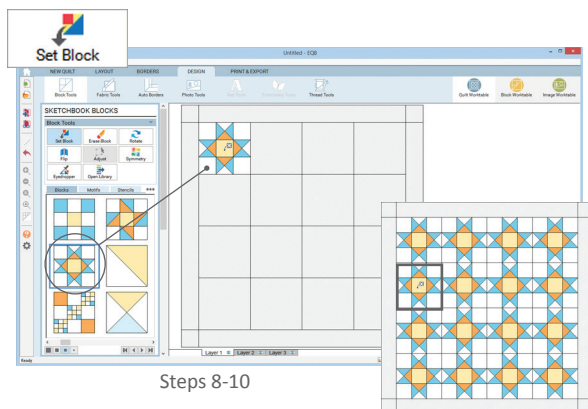
Step 5



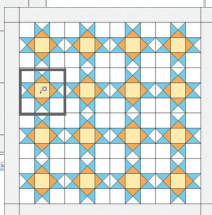
Step 6



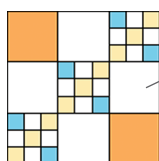
Step 7



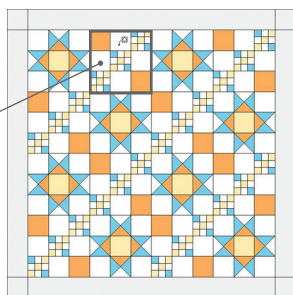
Steps 8-10



Step 11
CTRL/Command+click



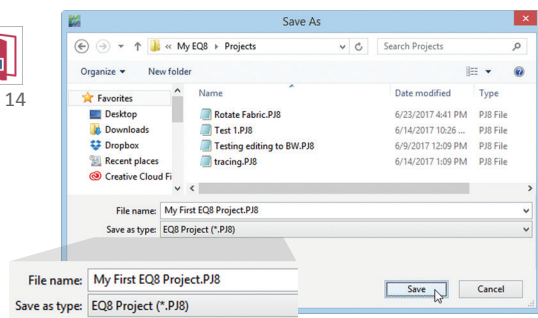
Step 12



Step 13
ALT/Option+click



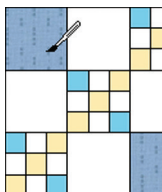
Step 14



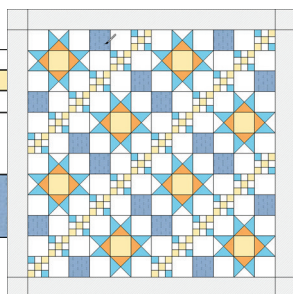
Step 15



Step 17




Step 18



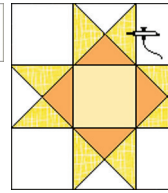
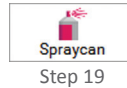
All squares colored

See note on page 18 if you don't see a blue fabric in your palette.

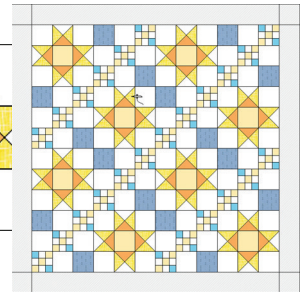
8. Click the **DESIGN** tab. The **Block Tools > Set Block** should be selected and you should see the default blocks in the palette.
9. Click to select the **Ohio Star** block in the palette.
10. Click on the **top-left space** in the quilt to set the block.
11. Let's put this block in every space in the quilt. Hold the **CTRL key** (Command key) and click on an empty block space in the quilt.
12. Select the **Nine Patch Chain** block in the palette.
13. Hold the **ALT key** (Option key) and click on the second block space in the quilt. The ALT key (Option key) will set blocks in alternating spaces in the quilt. This action has *replaced* some of the Ohio Star blocks with the Nine Patch Chain blocks.
14. Click the **Add to Project Sketchbook** button.
15. You will be prompted to save this file. Name this project, "**My First EQ8 Project**" and click **Save**. The My First EQ8 Project.PJ8 is now saved to your computer.
16. Click the **Fabric Tools** option on the DESIGN ribbon.
17. With the **Paintbrush** tool selected, choose a **light blue fabric** from the palette by clicking on it.
18. Click on an **orange square patch** in the quilt. Continue to click on the orange square patches to color them all.

Note: Use the horizontal scrollbar at the bottom of the palette to view all the Sketchbook fabrics. To view more fabrics in the palette at a time, click on the **Detach** button  in the fabric preview window. Move the preview off to the side and make it larger if you'd like. This will give room for fabric swatches in the palette, plus give you a larger preview of each swatch. To place the fabric preview back into the palette, click the close button.

19. Select the **Spraycan** tool and choose a **yellow fabric swatch** in the palette.

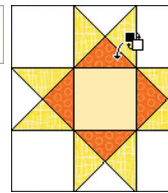
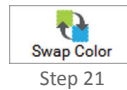


Step 20

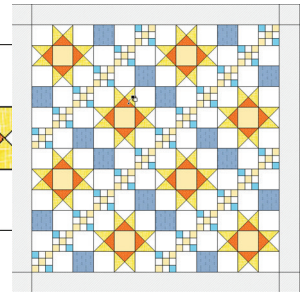


All star points colored

20. Click on a **blue triangle star point in an Ohio Star block**. Continue to click on a blue star point in all the Ohio Star blocks until they are colored with the yellow fabric.

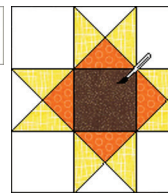
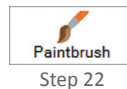


Step 21

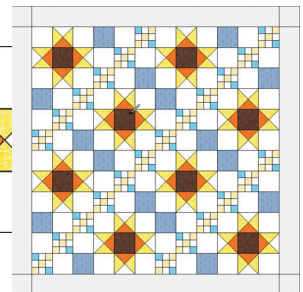


All triangles colored

21. Select the **Swap Color** tool. Choose an **orange fabric**, then click on an **orange triangle in an Ohio Star block**. All the orange triangles will change to the new orange fabric.

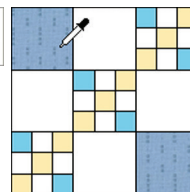
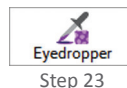


Step 22



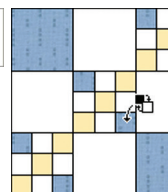
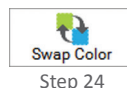
All center squares colored

22. Select the **Paintbrush** tool. Choose a **brown fabric** and hold **CTRL+click** (Command+click) on the **center square of an Ohio Star block**.

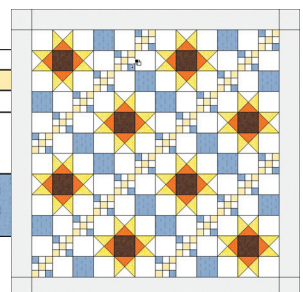


Step 23

23. Select the **Eyedropper** tool and click on one of the **large light blue squares** in the quilt. The Eyedropper finds the light blue fabric and selects it in the palette.

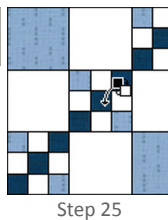
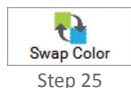


Step 24

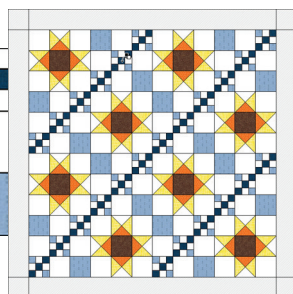


Small blue squares colored

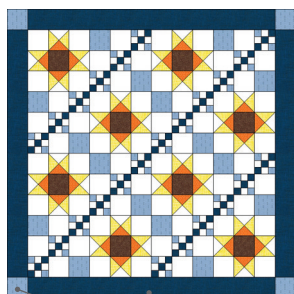
24. Click the **Swap Color** tool. Click on one of the **small blue squares in a Nine Patch Chain block**.



Step 25



Small yellow squares colored



Step 26

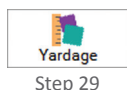


Step 27

PRINT & EXPORT



Step 28



Print Yardage Estimates

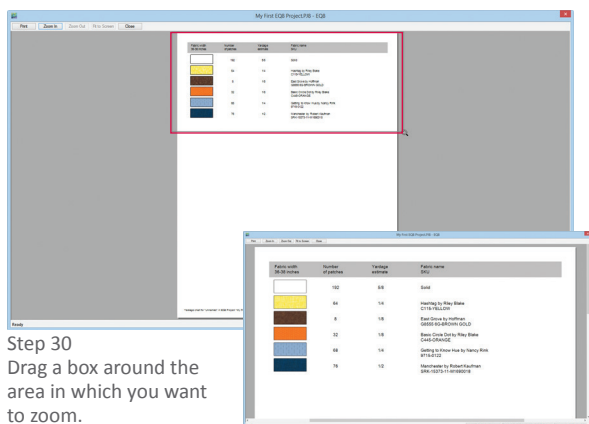
Width of Fabric (WDF)
In the drop-down below, choose your width of fabric with selvages. When EQ calculates the estimates, it does not include the selvages in the usable width.

Width **36-38 inches** ▼
☐ Fat quarters only

Seam Allowance
Width **0.25**

Help Page Setup... Fonts...
Preview Print Cancel

Step 29



Step 30
Drag a box around the area in which you want to zoom.

Preview enlarged for better viewing.

25. Choose a **dark blue fabric** and click on one of the **small yellow squares in a Nine Patch Chain block**.

26. Click on one of the **sides of the border** to color all four borders with the **dark blue**. Use the **Paintbrush tool** to color the corners with a **lighter blue fabric**.

27. Click the **Add to Project Sketchbook** button.

This time, EQ does not prompt us to save our project because we already did that in step 15. Now, when we choose to save (or Add to Project Sketchbook), we're just adding new variations of our quilt to this project's Sketchbook.

28. Click the **PRINT & EXPORT** tab at the top, then choose **Print** on the ribbon.

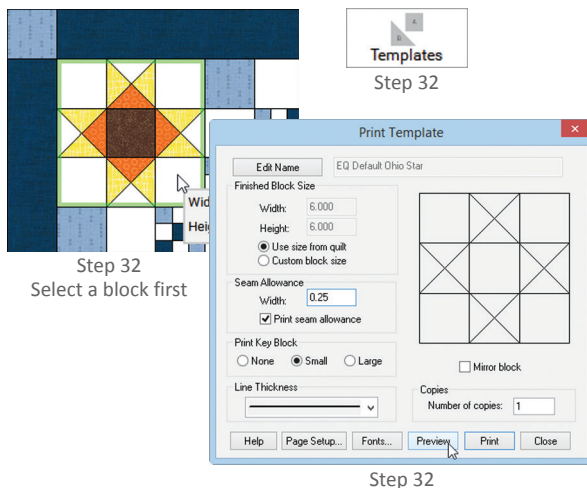
Note: The following steps will cover printing patterns. You can choose to print these patterns now, or simply view the Print Preview.

29. Click **Yardage**. Make changes to the selection if you want, and choose **Preview**.

30. To zoom in on the preview, click the **Zoom In** button at the top of the screen. With your cursor over the top-left corner of the yardage, click, hold and drag a box around the area. Release the mouse. The area will become larger. Click **Zoom Out** to return to 100% view.

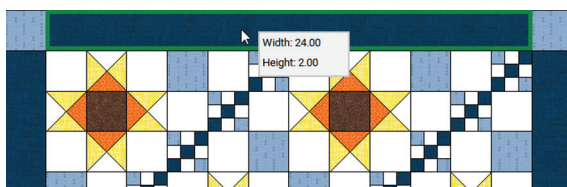
31. Click **Close** on the Preview, then **Cancel** to put the Print box away.

32. Click on an **Ohio Star block** in the quilt to select it. Now click **Templates**. (Block printing options are disabled until you click on a block in the quilt.) Leave all the options as they are and click **Preview**. Click **Close** on the Preview, then **Close** to put the Print box away.

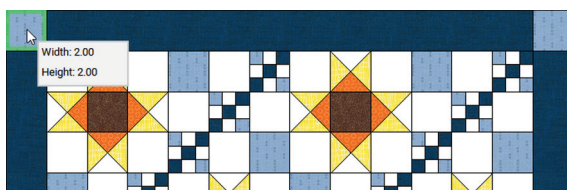


33. Repeat these steps to view Foundation, Rotary Cutting, and any other print options.

34. Click on **one of the borders** to select it. Notice that the size is 2 x 24 (finished).



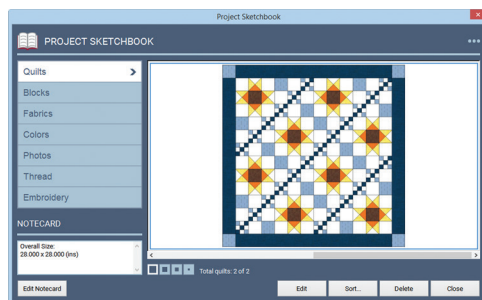
35. Click a **corner block** to see its size in the dimensions box. You can always print patterns for the borders, but this border is simple enough that the dimensions are all you would need to cut your fabric.



36. Click the **View Project Sketchbook** button. Click on the **Quilts** section to see all of your quilt variations you saved. Use the bottom scroll bar to view them all. Click the **Blocks** section to see your blocks' coloring variations. Close the Sketchbook when you're finished.



Step 36



This was a quick lesson on designing a basic quilt. Know that you can always access additional blocks and fabrics from the Libraries to use in your designs, plus there are many more customizable features.

Get more lessons and videos on our Support Site. Look for lesson books on our main website or at your local quilt shop.



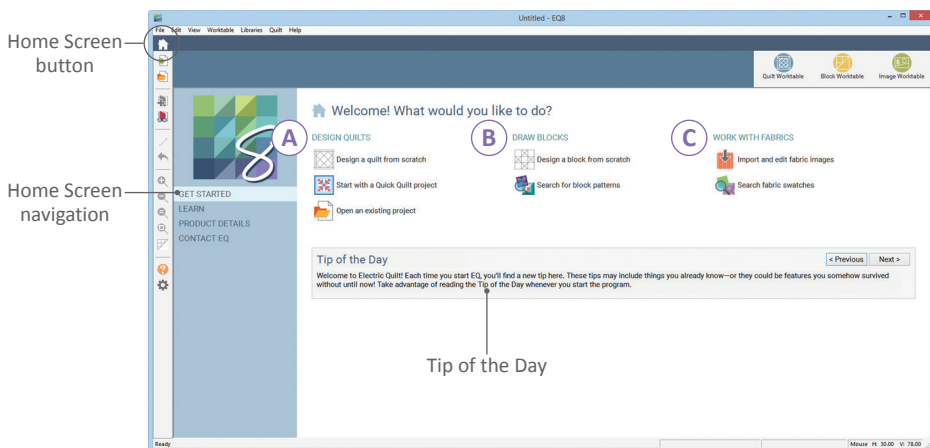
QUICK TIPS

This section includes many tips and explanations covering some of the EQ8 features asked about most frequently.

About the Home Screen	22
The EQ8 Worktables	23
Workspace Diagram	24
Making Workspace Adjustments.....	26
Creating Your Own Default Project.....	27
Opening Quick Quilt Projects	28
Printing Patterns from a Quilt.....	29
Understanding the Block Colorings	30
Understanding Layers	31
Block Drawing Styles	32
Using the Zoom Tools	35
Keyboard Shortcuts	36

ABOUT THE HOME SCREEN

When you first start EQ8, the **GET STARTED** section of the Home Screen is your landing page, offering guided help for different features in the program. Use the navigation on the left to find quick help, product details and contact information.



A DESIGN QUILTS

- **Design a quilt from scratch:** Start a new quilt design on the Quilt Worktable. This does not start a new project, only a new, blank quilt.
- **Start with a Quick Quilt project:** Open and work with a pre-designed project. These projects have several quilts, blocks and fabrics pre-loaded based on a theme.
- **Open an existing project:** Open and work with an EQ8 project that you previously created. This will offer a list of projects stored in the My EQ8 > Projects directory, but you can always navigate to find any EQ8 project (or project from previous EQ versions) on your computer.

B DRAW BLOCKS

- **Design a block from scratch:** Start a new block design on the Block Worktable. This does not start a new project, only a new, blank block.
- **Search for block patterns:** Open the Block Library to find a pre-drawn block to print patterns, design with and/or to edit to make your own.

C WORK WITH FABRICS

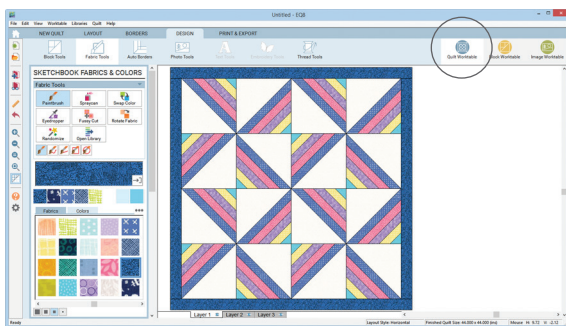
- **Import and edit fabric images:** Scan or take a photo of your own fabric, then import it into EQ to see it in your quilt design.
- **Search fabric swatches:** Open the Fabric Library to find a large variety of pre-loaded fabric to use in your project.

THE EQ8 WORKTABLES

EQ8 is comprised of 3 worktables, each offering different tools and features for your project.

Quilt Worktable

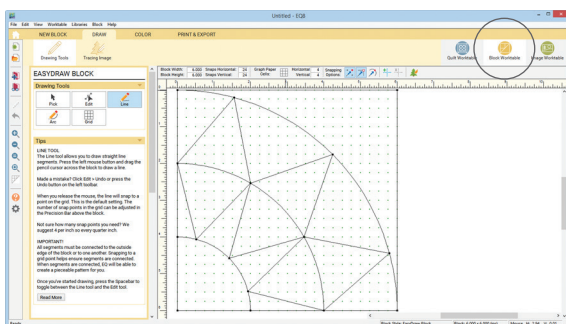
- Design quilts of all layout styles, including: traditional, modern, custom, strip, one-patch, baby blocks and more
- Customize borders (choose from 22 styles!)
- Add blocks, fabrics and threads
- Visualize quilting
- Create quilt labels



Quilt Worktable

Block Worktable

- Draw pieced blocks
- Draw applique blocks
- Draw combination blocks
- Create blocks without drawing
- Trace a photo to create a block



Block Worktable

Image Worktable

- Import your favorite photo, then crop, resize, and colorize for your photo quilt or project
- Import photo or scans of your fabric stash, then straighten, crop and scale for use in your quilt

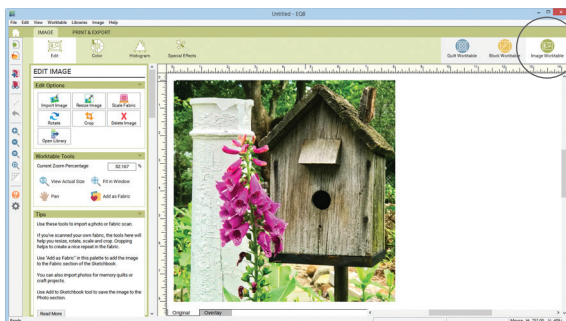
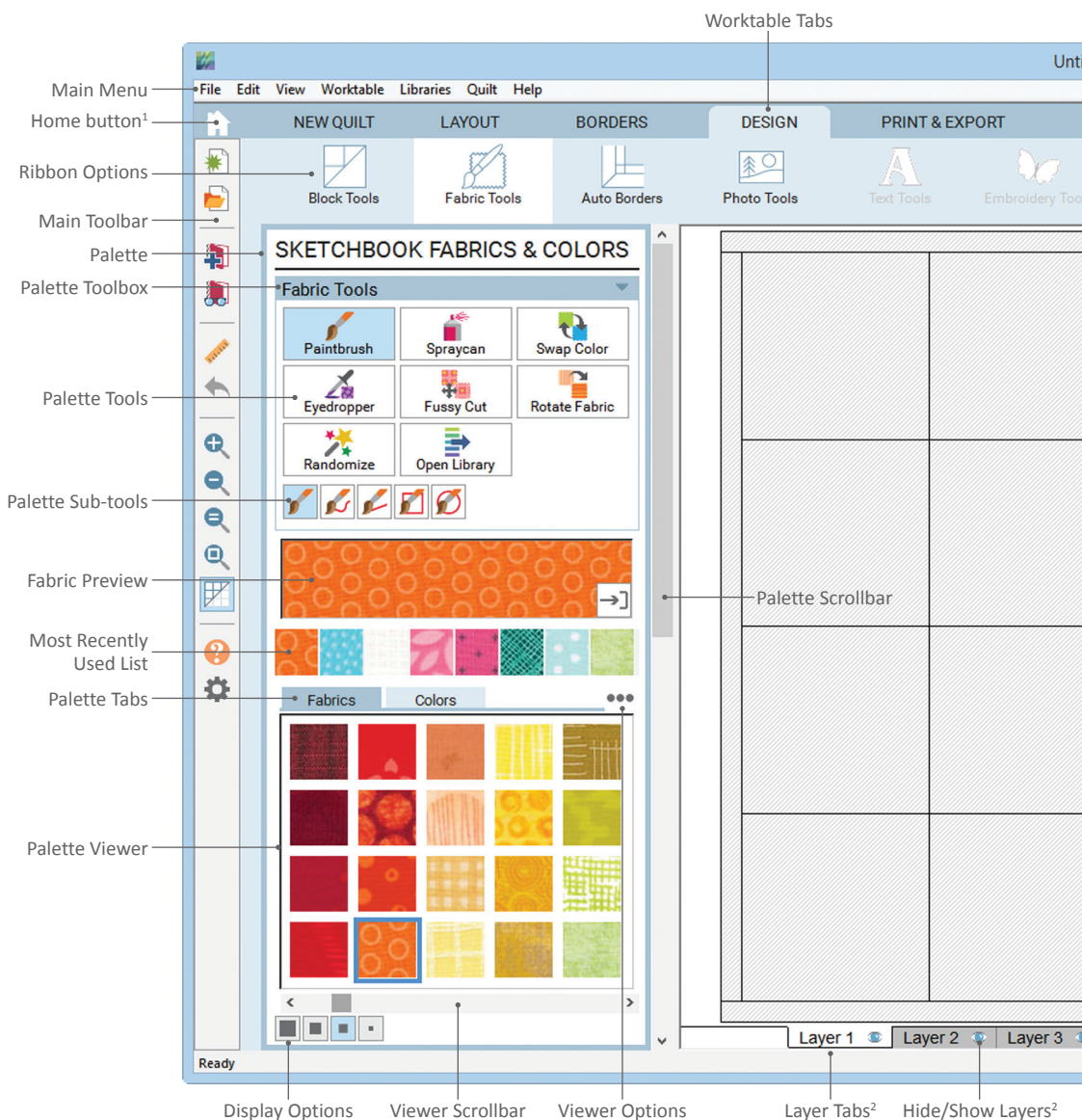


Image Worktable

WORKSPACE DIAGRAM

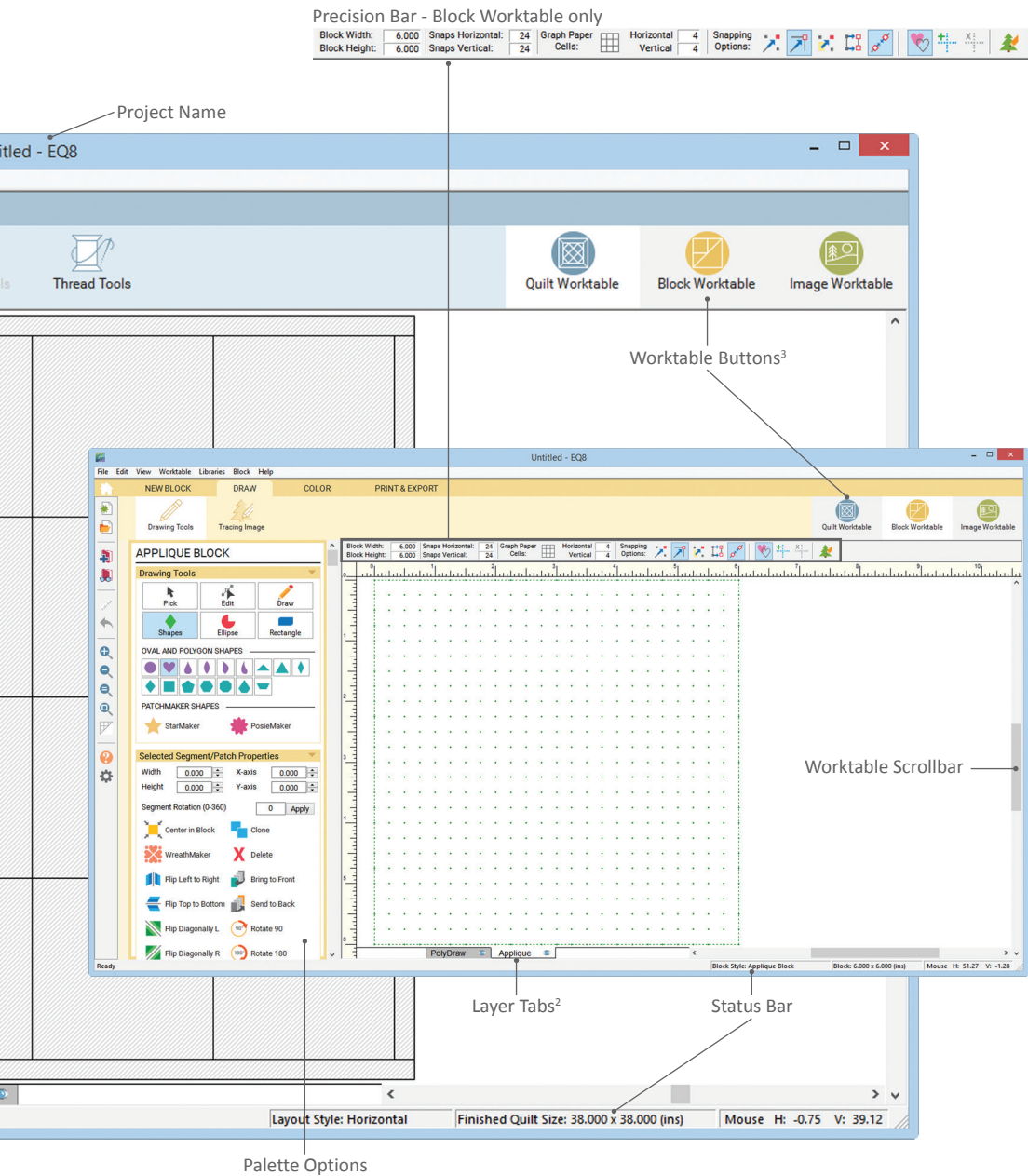
The diagram below shows the EQ8 Quilt Worktable (blue), fully labeled to help illustrate the workspace. The Block Worktable (yellow) is also shown smaller, with additional content.



¹ See page 22 for more about the Home Screen.

² See page 31 for more about Layers.

³ See page 23 to learn about the different worktables.

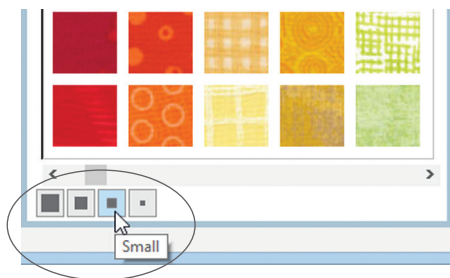


MAKING WORKSPACE ADJUSTMENTS

EQ8 offers many customizable ways to improve your experience.

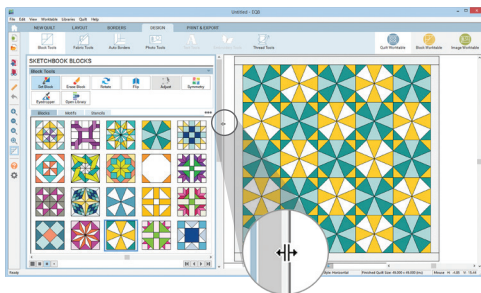
Display Buttons

Every palette that has Sketchbook content has display buttons at the bottom. Click these buttons to change the size of the content in the palette.



Resize Palette

Hover your mouse over the edge of the palette and drag to make it larger or smaller. This is very helpful when you have a lot of blocks or fabrics in your project.



Detach Fabric Preview

Detaching the Fabric Preview not only provides a larger view of the selected fabric, but it also allows space for more fabrics to be seen in the palette. Once detached, resize and move to wherever works for you.



Close the Toolboxes

All of the toolboxes can be closed. This option is helpful if you want to see more fabrics or blocks in the palette. Click the triangle to close the toolbox. Remember to open up the toolbox to switch tools!



Other Ways to Customize Your Workspace

On the top menu, select **File > Preferences > Display** to see even more ways to customize your workspace. Under Display, you can: move the ribbon to the side of the screen, change the tools to smaller icons (shown at right), and hide all the palette tips. Depending on your screen proportions, a combination of these settings may allow for more blocks and fabrics to be seen in your palettes.



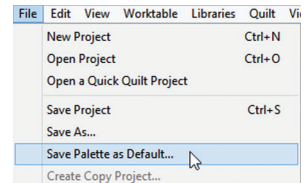
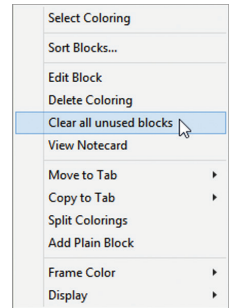
CREATING YOUR OWN DEFAULT PROJECT

Follow the instructions below to change your default project. The next time you open EQ8, or start a new project, you will be starting with the Sketchbook items YOU selected, instead of what was pre-loaded in EQ8.

WARNING: Make sure you are in a new, clean project file, as you don't want to lose any of your in-progress designs.

Delete the Default Content

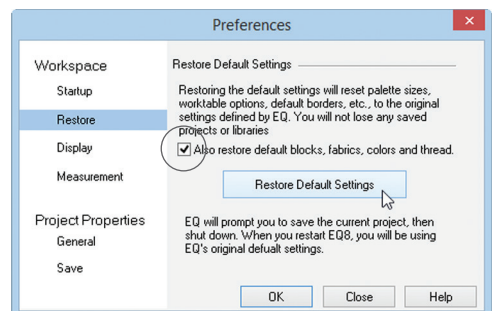
1. Start a **new** project.
2. Click **View Project Sketchbook**.
3. Click the **Blocks** section. You'll see the pre-loaded default blocks.
4. Click the **3-dot Options** button in the upper-right of the Sketchbook window.
5. Choose **Clear All Unused Blocks**.
6. Click **Yes** to the prompt. The Blocks section should be empty.
7. Repeat steps 4-6 for the **Motifs** and **Stencils** tabs in the Blocks section, and also for **Fabrics** and **Threads**, if desired.
8. **Close** the Sketchbook.
9. (Optional) Open the libraries and add any new items you'd like. Close the library.
10. When you have your project just as you would like, click **File > Save Palette as Default**. Click OK to the prompt. The next time you start a new project, you will see **your** default palettes, whether completely empty, or with your own content.



Note: You can also save your default project with newly sorted content. For example, in the Colors section of the Sketchbook, you might want to put black and white swatches at the beginning of the Color palette. Sort the colors so black and white are first in the list. When you choose File > Save Palette as Default, the black and white will always be at the beginning of all new projects.

Restore EQ's Default Project

1. Click **File > Preferences**.
2. On the left side, click **Restore**.
3. Put a check next to **Also restore default blocks, fabrics, colors and thread**.
4. Click the big **Restore Default Settings** button.
5. EQ8 will close. Double-click the **EQ8 icon** to open it again.



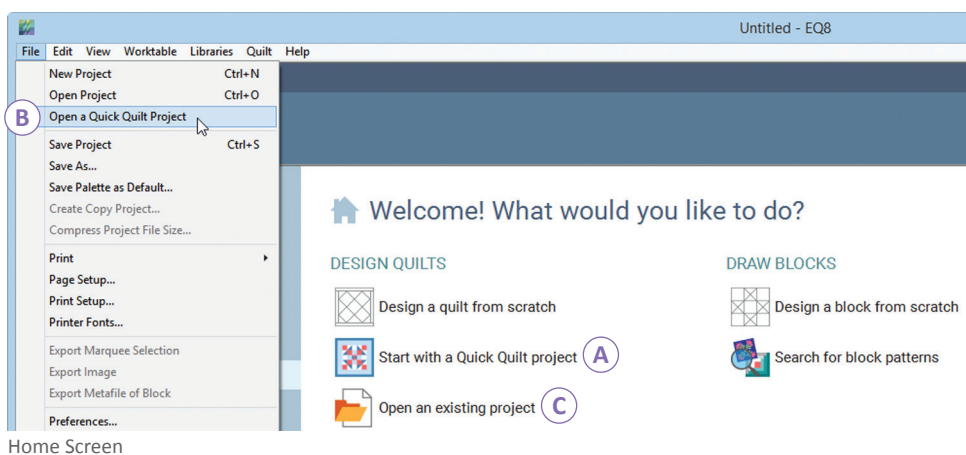
OPENING QUICK QUILT PROJECTS

Quick Quilt projects are EQ projects that contain pre-designed quilts of a particular theme or style. These are great ways to get started with a design without starting from scratch. Edit any of these quilts or blocks to the worktable and start editing.

To open a Quick Quilt project:

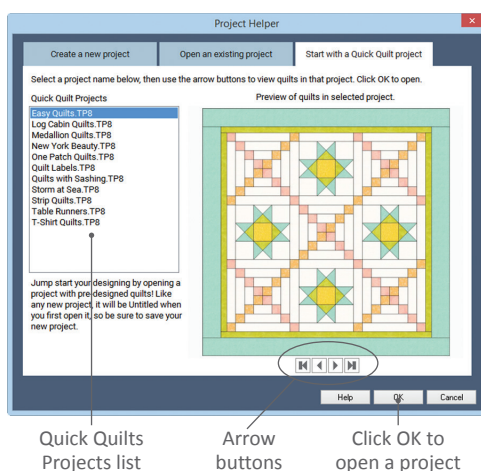
There are 3 ways to open a Quick Quilt project.

- A** On the Home Screen, choose **Start with a Quick Quilt project**
- B** From the File menu, choose **File > Open a Quick Quilt Project**
- C** Click the New Project or Open Project buttons, then click the **Start with a Quick Quilt project** tab



The Quick Quilts are listed on the left side of the Project Helper window. Each Quick Quilt project contains multiple quilts. Use the arrow buttons to view all the quilts in each project. Click **OK** to open a project. The Project Sketchbook will appear. Select a design in the Sketchbook and click **Edit** to put it on the worktable.

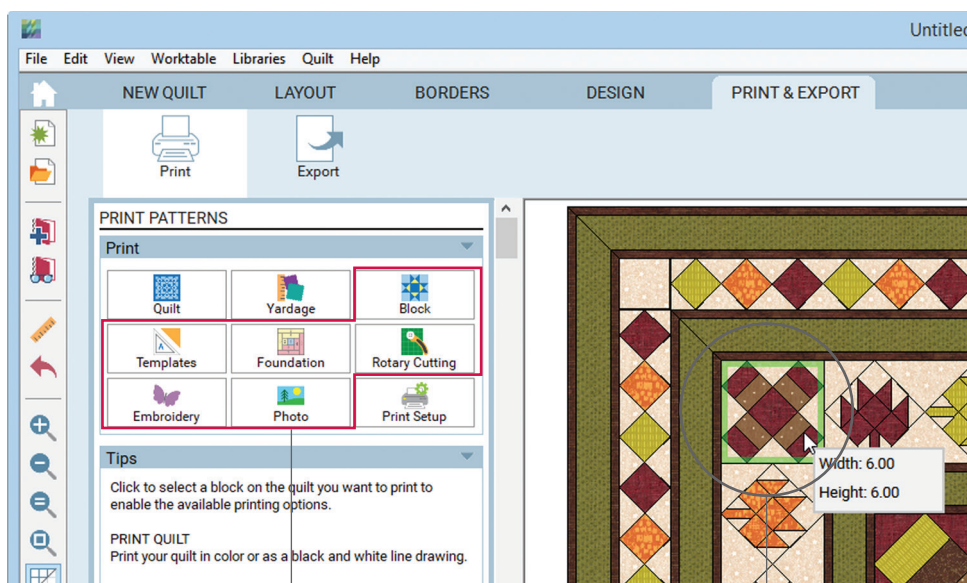
When a Quick Quilt project opens, it will be **Untitled**, meaning the file hasn't been saved to your computer's hard drive yet. Be sure to choose **File > Save Project** to save this file to your computer. Alternatively, the first time you choose Add to Project Sketchbook, you'll be prompted to save the file, if you haven't already.



PRINTING PATTERNS FROM A QUILT

To print block patterns from a quilt, you must first tell EQ which block you'd like a pattern for by clicking on the block in the quilt to select it.

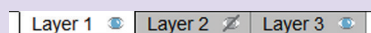
1. Design a quilt on the **DESIGN** tab.
2. Click the **PRINT & EXPORT** tab, then choose **Print** on the ribbon.
3. **Click on a block in the quilt.** You'll see an outline around the block, indicating that it is selected. (Note: If you want to print the Quilt or Yardage, you do not need to select a block first.)
4. **Choose a printing option** in the palette.



These options require that you select a design in the quilt first. If a design is not selected, you will be prompted to do so.

To print patterns, first select the block.

Important! If you have designs on Layers 2 or 3, you must select the appropriate layer first, then click on the design. Read more about layers on page 31.

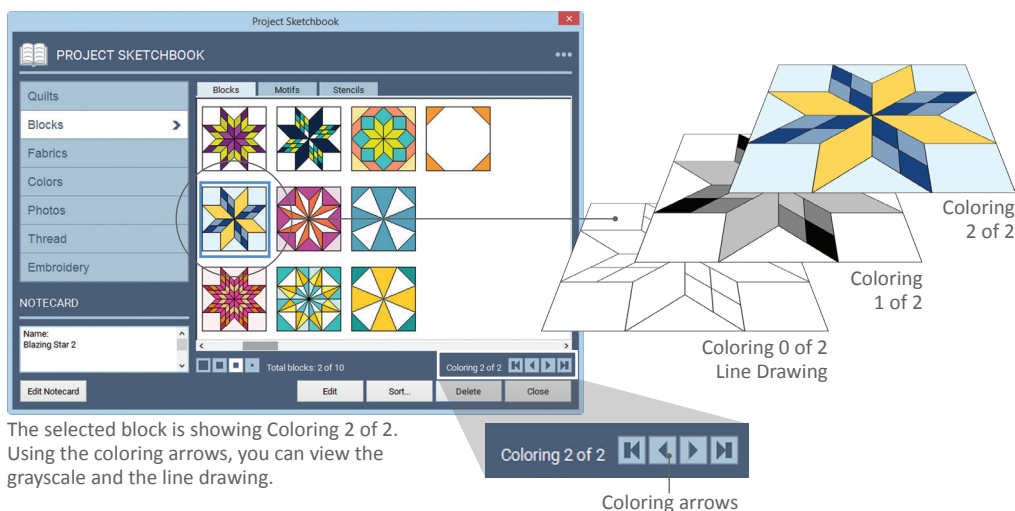


UNDERSTANDING THE BLOCK COLORINGS

Blocks from the EQ8 Library

Every block in the EQ8 Block Library has been colored twice. The first coloring is grayscale. The second coloring is done with solid colors from the default color palette. While some people like to design using the colored blocks, many prefer to use the grayscale so they are designing with value, not with colors. They prefer to color their blocks later with fabrics of similar value.

When you view one of the library blocks in the Sketchbook, the Sketchbook will indicate **one drawing** and **two colorings**. By default, EQ8 stacks up to 2 colorings per block.



The selected block is showing Coloring 2 of 2. Using the coloring arrows, you can view the grayscale and the line drawing.

When Do Blocks Get Stacked?

You can add your own colorings to the library blocks by coloring the patches. You can also draw your own blocks, which will have colorings created by you. When you click the Add to Project Sketchbook button, a new coloring gets created.

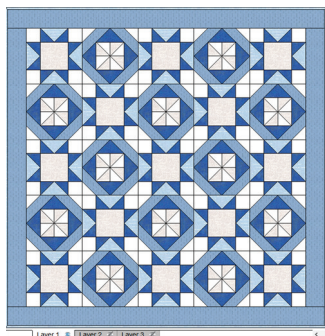
- If the block only has 1 coloring (for example, the default blocks and any newly created blocks), when you click Add to Project Sketchbook, the new coloring will get stacked on top of the first coloring. Now this one block has two colorings (Coloring 2 of 2).
- If the block already has 2 colorings, a new block will get created with the newest coloring when you click Add to Project Sketchbook. This new block will have the same line drawing (Coloring 0 of 1), but with a new coloring (Coloring 1 of 1).

In previous versions of EQ, the block colorings would stack up to 10 colorings instead of 2. You can change this stacking number in Preferences if you prefer to have the colorings stack differently. Choose File > Preferences > General and adjust the option for Block Colorings. If you don't want your blocks to stack at all, change the option to 1 in Preferences. However, please know that any library blocks will "unstack" the grayscale from the color once they are added to your project.

UNDERSTANDING LAYERS

Quilt Workable Layers

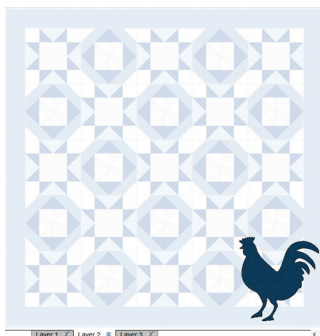
On the Quilt Worktable, you'll see 3 tabs at the bottom of your screen.



Layer 1

Made up of pieced or applique blocks sewn together to make the quilt top.

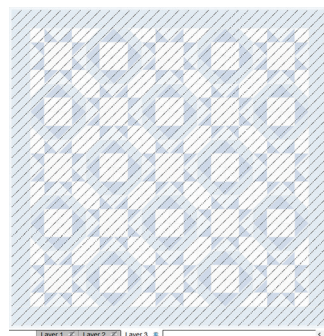
Blocks are set onto the quilt by clicking into a predefined block space.*



Layer 2

For blocks, motifs and text that are sewn onto the quilt top.

Blocks and motifs are set by dragging from the palette and dropping them onto the quilt. The Adjust tool is used to move, resize, rotate and skew these designs.

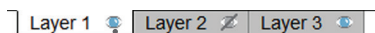


Layer 3

For your quilting and embroidery.

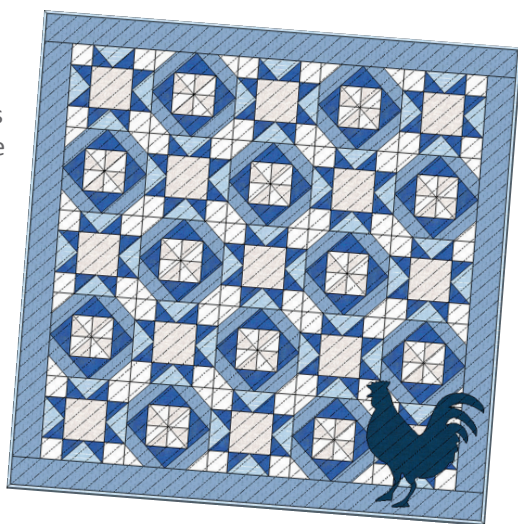
Quilting stencils and embroidery are set by dragging from the palette and dropping it onto the quilt. The Adjust tool is used to move, resize, rotate and skew these designs.

Use the Layer icons to turn layers on and off for easier designing. **Turning a layer off does not delete the contents of the layer.** It simply hides the content. Click the Eye icon again to have the content reappear.



Click the Eye icon to hide the contents of a layer

**Layer 1 of a Custom Set quilt does not have pre-defined block spaces. Custom Set requires a drag and drop method for setting the blocks. The Adjust tool is used to move, resize, rotate and skew the blocks.*

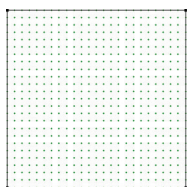


Quilt showing content on all 3 layers

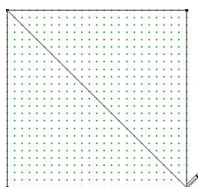
BLOCK DRAWING STYLES

Pieced EasyDraw Blocks

The EasyDraw tools are for drawing traditional pieced blocks in a way that is similar to drawing with pencil and paper. Click, hold and drag your mouse from one point to the next. EQ provides a block outline for you when you start a new block drawing. You can use the Line tool and Arc tool to drag from the block's outside edge dividing the block into patches.



Start a new block and EQ gives you the block's outside edge.



Draw a diagonal line from one outside edge to the other to divide the block into two triangles.



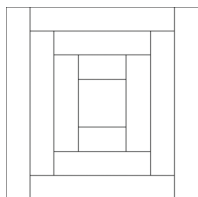
EQ does the rest for you. It understands the drawing and creates the templates that make up the block.

The Benefits and Rules of EasyDraw

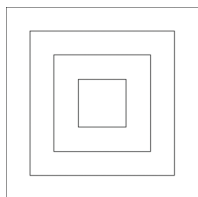
It is not necessary to think in terms of outlining patches. Instead, you draw one line and EQ does the rest. That's why we call it **EasyDraw**. The technique is intuitive and natural. Draw as many segments as you like, letting them cross and intersect one another as needed.

There is one concrete rule that can never be broken for EasyDraw to successfully create a block from your drawing. **All segments of the drawing must connect to one another.** When EQ finds the points where segments touch or intersect one another, it can define the patch. If EQ cannot find these points, it cannot define the patch.

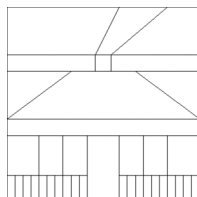
There may be times when the patches you get when you try to color an EasyDraw block are not what you expected. When this happens, it's because your block looked acceptable in normal view, but in a zoomed view, you find that segments were not touching one another.



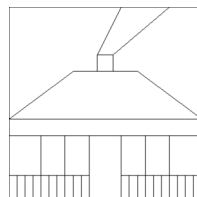
Good: All lines touch creating a pieceable block



Bad: No lines from inner squares touching outer squares



Good: All lines touch creating a pieceable block



Bad: Lines touch, but the sky patches cannot be easily pieced

Snap Setting Suggestions

For the number of snaps, multiply the block size by 4 to get snaps at every 1/4 inch. So a 6" x 6" block would have 24 Snaps Horizontal and 24 Snaps Vertical.

- For *pieced blocks based on a standard grid* (like log cabins, Ohio stars, etc.), have **Snap to Grid** and **Snap to Node** turned **ON**.
- For *pictorial blocks (like a foundation pieced bird or realistic flower)*, turn OFF Snap to Grid. Turn **ON/OFF Snap to Node** and **Snap to Lines and Arcs** as needed.

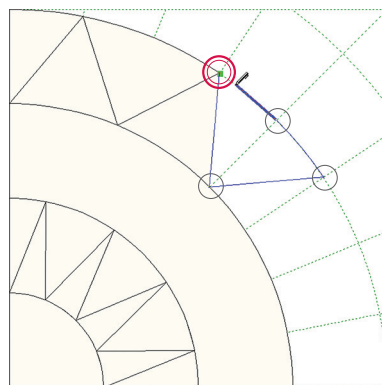


Pieced PolyDraw Blocks

The PolyDraw tools are for drawing pieced blocks by creating closed patches. These patches are adjacent to each other, **never** overlapping. This is very different from EasyDraw, where you simply draw the seam lines and let EQ create the patches. PolyDraw offers several grids to work with to create quick pieced blocks.

This drawing technique is the most unique. It's more of a CAD-type drawing style. To draw a patch, first **double-click and release** on the worktable to anchor your drawing line (green square). Move your mouse cursor to the next point then **single-click and release** to anchor the drawing line. Continue to single-click and release to anchor the drawing line at different points. When you return back to the starting point (green square), **double-click** to close the patch.

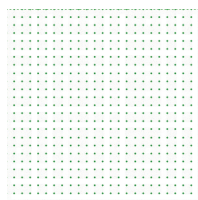
You can use the Clone and Rotate tools in the palette to quickly complete your block.



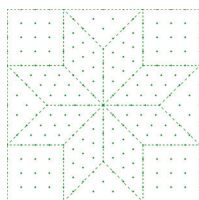
Double-click to start and finish a patch.

Grids and Recommended PolyDraw Tools

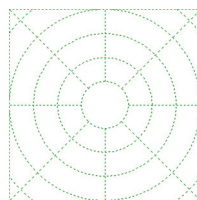
Most grids require that you use the Poly**Line** tool. If the grid has curves, use the Poly**Arc** tool. Snap points for PolyDraw are based on the chosen grid. Change the Horizontal/Vertical, Rings/Spokes and Dimensions as needed. Check the online help for more information.



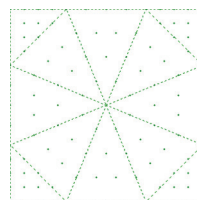
Rectangle Grid
Use the PolyLine Tool



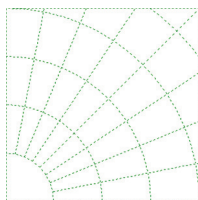
Eight Point Star Grid
Use the PolyLine Tool



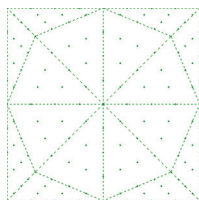
Circle Grid
Use the PolyArc Tool



Kaleidoscope Grid
Use the PolyLine Tool



Arc Grid
Use the PolyArc Tool



Octagon Grid
Use the PolyLine Tool

Layer Tabs

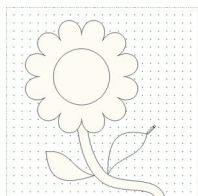
This block type has layer tabs at the bottom of the worktable. The Applique tab can be ignored. See page 31 for information on hiding these layers.



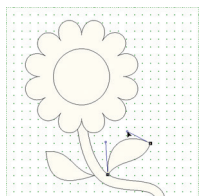
Applique Blocks & Motifs

The Applique tools are used to create closed shapes or open curves. An open curve can represent stitching, like the whiskers on a cat. Click, hold and drag your mouse from one point to the next. Release the mouse to finish your patch. Use the Edit tool to adjust the shape of your patch or line.

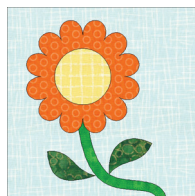
Appliques need to be closed shapes so EQ can create the patches, however open curves can be drawn to be used as stitching lines for embellishments (cat whiskers, for example).



Start drawing the basic elements of your block design.



Use the Pick and Edit tools to copy, paste, resize, rotate and shape patches.



When you choose *Applique Block*, you'll have a background patch to color.



When you choose *Applique Motif*, there is no background patch.

Block vs. Motif

An applique **Block** always has a background patch behind the applique. The applique is intended to be sewn directly to the block first, before being sewn into the quilt. This background patch can be plain or pieced. **Blocks** can be set on all layers of the quilt.

An applique **Motif** does not have a background patch behind the applique. Applique motifs are intended to be sewn to the already-sewn quilt top (over sewn blocks, sashing or borders), not to a single block. **Motifs** can be set on Layers 2 and 3 of the quilt.

Snap Setting Suggestions

Have **Snap to Node** and **Auto Join Segments** turned **ON**. Snap to Grid and Snap Whole Patch to Grid could be helpful if you were working with a specific grid. Typically these options are turned off when drawing applique.



Layer Tabs (Block only)

The Applique Block type has layer tabs at the bottom of the worktable. The PolyDraw tab automatically creates the plain background patch behind the applique—making it a block, not a motif. The PolyDraw tab can be ignored for this style, unless you would like a pieced background. The Applique tab is where you draw your applique designs. See page 31 for information on hiding these layers.



USING THE ZOOM TOOLS

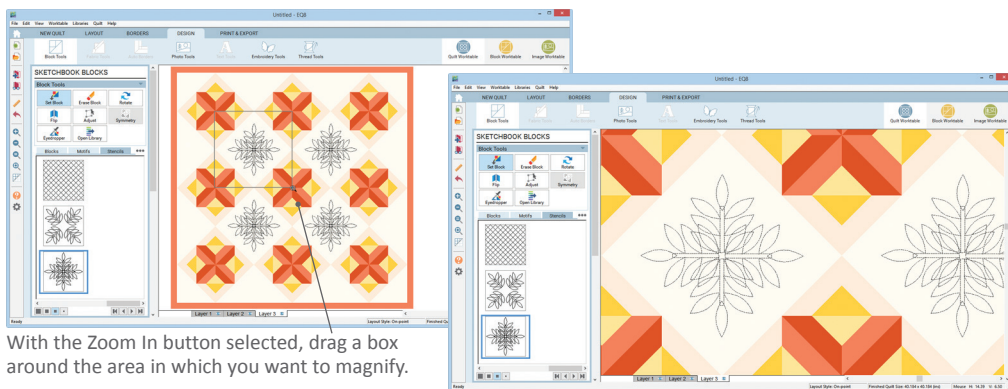


Zoom In

To zoom in on a worktable, you need to drag a box with the Zoom In tool around the area you want to enlarge. Keyboard shortcut: CTRL++ (Command++ for Mac)

1. Click the **Zoom In** button.
2. Move your mouse cursor **over the top-left of the area** in which you want to zoom.
3. Click and hold your mouse cursor as you **drag down and to the right** of the area.
4. **Release** the mouse.

If you drag a small box around an area, you will zoom in really closely. If you drag a large box around an area, your zoom level will be very minimal. You may have to zoom in again to get closer.



With the Zoom In button selected, drag a box around the area in which you want to magnify.

The area is now zoomed in. Use the Zoom Out button, or Fit to Worktable, to go back to the original zoom level.



Zoom Out

Click the Zoom Out button to go back 1 zoom level. You may have to click this button multiple times if you were zoomed in at multiple zoom levels. Keyboard shortcut: CTRL+- (Command+- for Mac)



Refresh Screen

To clean up your screen, click the Refresh Screen button. This is useful when drawing complicated blocks, possibly while zoomed in, to clean up any remnant drawings without changing your zoom level. Keyboard shortcut: F5



Fit to Worktable

Click the Fit to Worktable button to return your worktable to the default zoom level. This is also a helpful tool if you've scrolled your design too far up/down or left/right on your screen. Fit to Worktable will put the design back into place. Keyboard shortcut: CTRL+0 (Command+0 for Mac)

Note: You can also zoom in and out by holding the CTRL key or Command key and scrolling your mouse wheel. Use Fit to Worktable to return to the full screen level.

KEYBOARD SHORTCUTS

Speed Keys

Use these speed keys on the Quilt Worktable to quickly set blocks and/or color patches.

CTRL+click (Windows)

Command+click (Mac)

Setting blocks, photos

Sets blocks in all pre-defined spaces of a quilt layout

Coloring with Paintbrush tool

When the same block is used multiple times in a quilt, holding this speed key while clicking will color the same patch in all of those blocks at once.

Coloring with the Spraycan tool

When the same fabric/color is used multiple times in a quilt, holding this speed key while clicking will color the matching fabric/color in all the blocks at once.

ALT+click (Windows)

Option+click (Mac)

Setting blocks, photos

Sets blocks in alternating pre-defined spaces of a quilt layout

Coloring with Paintbrush tool

When the same block is used multiple times in a quilt, holding this speed key while clicking will color the same patch in alternating blocks at once.

Coloring with the Spraycan tool

When the same fabric/color is used multiple times in a quilt, holding this speed key while clicking will color the matching fabric/color in alternating blocks at once.

File Handling

Command	Windows	Mac
New	CTRL+N	Cmd+N
Open	CTRL+O	Cmd+O
Save / Add to Sketchbook	CTRL+S	Cmd+S

Editing

Command	Windows	Mac
Undo	CTRL+Z	Cmd+Z
Cut	CTRL+X	Cmd+X
Copy	CTRL+C	Cmd+C
Paste	CTRL+V	Cmd+V
Clear	Delete	Delete/ Backspace

Miscellaneous

Command	Windows	Mac
Select All	CTRL+A	Cmd+A
Select last drawn segment(s)	Spacebar	Spacebar
Flip arc on EasyDraw block	Spacebar (while drawing)	Spacebar (while drawing)
View Sketchbook	F8	F8
Close dialog box	Esc	Esc
Zoom in	CTRL++	Cmd++
Zoom out	CTRL+-	Cmd+-
Refresh	F5	F5
Fit to Worktable	CTRL+0	Cmd+0

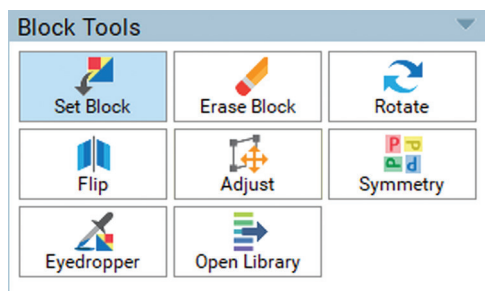


TOOL REFERENCE

This section gives a brief summary of each tool in EQ8. For more detailed explanations, check the online Support website.

Quilt Worktable Tools	38
Block Worktable Tools	42
Image Worktable Tools	44

QUILT WORKTABLE



Block Tools

This toolbox is found on the **Quilt Worktable**. Click the **DESIGN** tab on the top ribbon, then choose **Block Tools**.

Set Block

Click on a space in the quilt, or drag and drop a block onto the quilt.

Erase Block

Click on a block in the quilt to remove the block from that space.

Rotate

Click a block in the quilt to rotate it 90 degrees with each click.

Flip

Click on an asymmetric block in the quilt to mirror it left to right.

Adjust

Select a block on the quilt to move, rotate and resize it on Layers 2 and 3, as well as Layer 1 of Custom Set quilts. This tool is only enabled when on the appropriate layer.

Symmetry

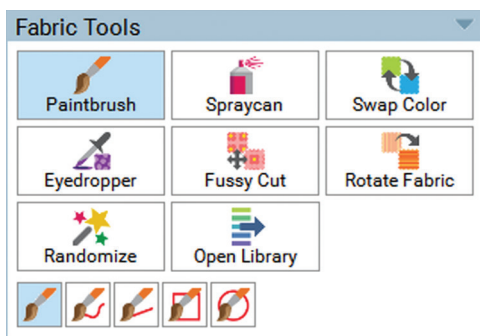
Click on the quilt to flip and rotate asymmetric blocks in 16 different variations. This works best with horizontal layouts.

Eyedropper

Click a block in the quilt to quickly locate it in the palette.

Open Library

Opens the Block Library window.



Fabric Tools

This toolbox is found on the **Quilt Worktable**. Click the **DESIGN** tab on the top ribbon, then choose **Fabric Tools**.

Paintbrush

Click on a patch in the quilt to color it with the selected fabric.

Spraycan

Click on a patch in the quilt to color all matching fabrics in the *block* at one time.

Swap Color

Click on a patch in the quilt to color all matching fabrics in the *quilt* at one time.

Eyedropper

Click a patch in the quilt to quickly find the fabric or color used in the palette.

Fussy Cut

Click, hold and drag to move the fabric around within a patch in the quilt.

Rotate Fabric

Click the fabric in the quilt to rotate it within the patch.

Randomize

Choose an option, then click on the quilt to recolor quickly.

Open Library

Opens the Fabric Library window.

Check the online help for information about any palette sub-tools.

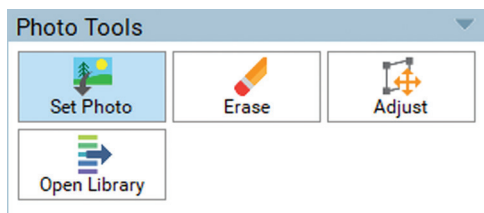


Photo Tools

This toolbox is found on the **Quilt Worktable**. Click the **DESIGN** tab on the top ribbon, then choose **Photo Tools**.

Set Photo

Click on a space in the quilt, or drag and drop a photo onto the quilt. Photos can be set on any layer of the Quilt Worktable.

Erase

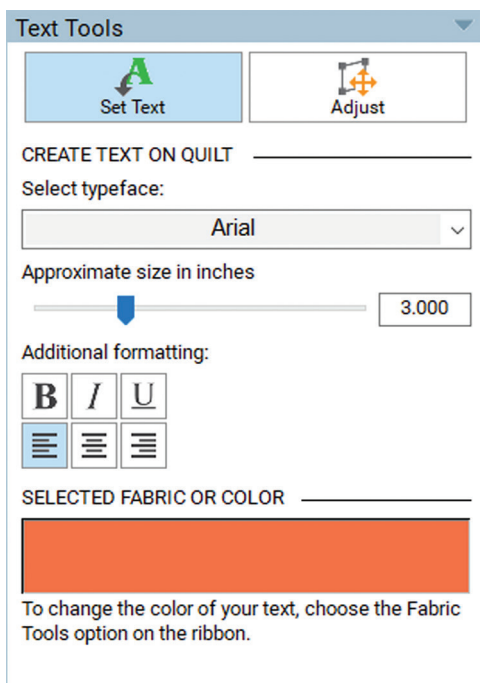
Click on a photo in the quilt to remove the photo from that space.

Adjust

Select a photo on the quilt to move, rotate and resize it on Layers 2 and 3, as well as Layer 1 of Custom Set quilts. This tool is only enabled when on the appropriate layer.

Open Library

Opens the Photo Library window.



Text Tools

This toolbox is available when **Layer 2** is selected at the bottom of the Quilt Worktable. Click the **DESIGN** tab on the top ribbon, then choose **Text Tools**.

Set Text

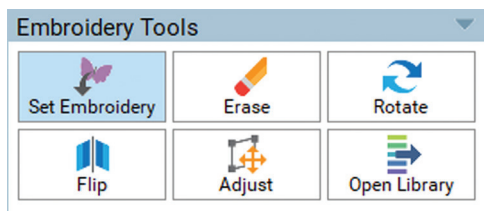
Hold the keyboard SHIFT key, then click, hold and drag to create a text box on the quilt. When you release, you'll have a box in which you can start typing.

Adjust

Select a text box on the quilt to move, rotate, resize and delete it on Layer 2.

Note: Text Tools are only available when Layer 2 is selected at the bottom of the Quilt Worktable.

QUILT WORKTABLE



Embroidery Tools

This toolbox is available when **Layer 3** is selected at the bottom of the Quilt Worktable. Click the **DESIGN** tab on the top ribbon, then choose **Embroidery Tools**.

Set Embroidery

Drag an embroidery design from the palette to Layer 3 of the quilt.

Erase

Click on a design in the quilt to remove it from its space. Use the Adjust tool to completely remove the empty space.

Rotate

Click an embroidery in the quilt to rotate it 90 degrees with each click.

Flip

Click an embroidery in the quilt to mirror it left to right.

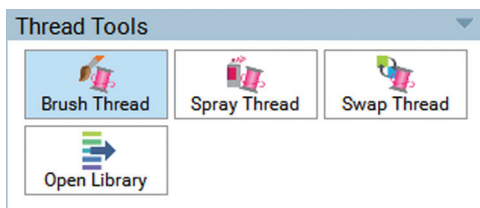
Adjust

Select an embroidery on the quilt to move, rotate, resize and delete it on Layer 3.

Open Library

Opens the Embroidery Library window.

Note: *Embroidery Tools are only available when Layer 3 is selected at the bottom of the Quilt Worktable.*



Thread Tools

This toolbox is found on the **Quilt Worktable**. Click the **DESIGN** tab on the top ribbon, then choose **Thread Tools**.

Brush Thread

Click a patch in the quilt to color the outlines with the selected thread color.

Spray Thread

Click a patch in the quilt to color the outlines of all matching patches in the *block* at one time.

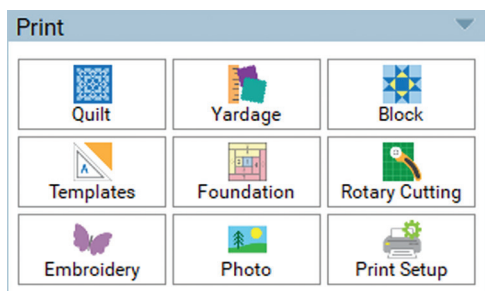
Swap Thread

Click a patch in the quilt to color the outlines of all matching patches in the *quilt* at one time.

Open Library

Opens the Thread Library window.

PRINT & EXPORT TOOLS



Print options on the Quilt Worktable shown above

Print

This toolbox is found on the **Quilt Worktable**. Click the **PRINT & EXPORT** tab on the top ribbon, then choose **Print**.

Quilt (Quilt Worktable only)

Prints a picture of the quilt.

Yardage (Quilt Worktable only)

Prints the yardage requirements for your quilt.

Block

Prints a picture of the selected block.

Templates

Prints templates of the selected block.

Foundation

Prints foundation patterns of the selected block.

Rotary Cutting

Prints rotary cutting instructions of the selected block.

Embroidery (Quilt Worktable only)

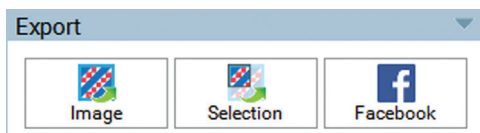
Prints a picture of the selected embroidery. Only available with embroidery selected on Layer 3.

Photo (Quilt Worktable only)

Prints a picture of the selected photo.

Print Setup

Opens the Print Setup dialog to adjust your print settings.



Export options on the Quilt Worktable shown above

Export

This toolbox is found on the **Quilt Worktable**. Click the **PRINT & EXPORT** tab on the top ribbon, then choose **Export**.

Image

Exports an image of the quilt (or the selected block) as a *.JPG, *.TIF, *.GIF, *.PNG or *.BMP file.

Selection

Exports an image as a *.BMP file of the selected area. Drag a box around an area of your quilt to export only that area.

Metafile (Block Worktable only)

Exports a vector metafile (*.EMF) to explode blocks in another vector software. This is only available for Windows computers.

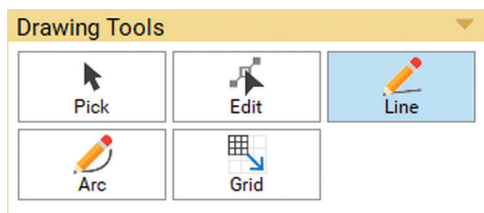
Facebook (Quilt Worktable only)

Exports an image of your quilt to your Facebook page for your peers to see.

Note: The Print & Export options are similar on the Quilt and Block Worktables. You may notice some of the options are not available on the Block Worktable and vice versa.

Also, some printing options do not apply to particular quilt elements, and may not be available. For example, if you have an applique block selected, then Foundation, Rotary Cutting, Embroidery and Photo will not be available because they do not apply to the selected applique block.

BLOCK WORKTABLE



EasyDraw Tools

This toolbox is found on the **Block Worktable**. With an **EasyDraw Block** selected, choose the **DRAW** tab on the top ribbon, then choose **Drawing Tools**.

Pick

Click on a segment (line or arc) to select it. Selected segments can be moved, resized, rotated, deleted and converted to guides. This tool does have Advanced options available.

Edit

Click on a line or arc to adjust the endpoints (nodes) or the shape of the curve, where applicable.

Line

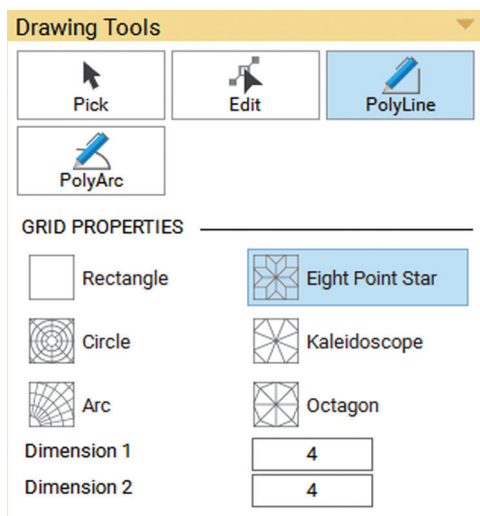
Click, hold and drag your mouse to draw a line from point to point on the block.

Arc

Click, hold and drag your mouse to draw an arc on the block. Use the Spacebar to flip the direction of the arc.

Grid

Enter the Columns and Rows of your grid, then drag diagonally on the block to place your grid.



PolyDraw Tools

This toolbox is found on the **Block Worktable**. With a **PolyDraw Block** selected, choose the **DRAW** tab on the top ribbon, then choose **Drawing Tools**.

Pick

Click on the edge of a patch to select it. Selected patch(es) can be flipped, rotated, cloned and deleted.

Edit

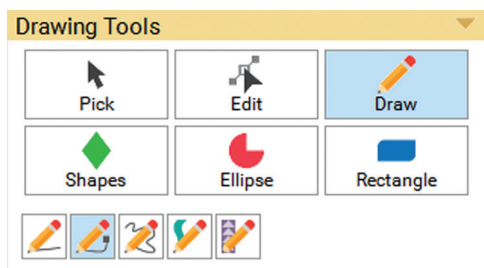
Click on the edge of a patch to select it. Drag a node to reposition it. Double-click a node to delete it. Double-click a line/curve to add a new node.

PolyLine

This tool will follow straight line grids. Double-click to anchor your starting point. Single click to anchor additional points to create the patch shape. Double-click on the starting point to close the patch.

PolyArc

This tool will follow straight line and curved grids. Double-click to anchor your starting point. Single click to anchor additional points to create the patch shape. Double-click on the starting point to close the patch.



Applique Tools

This toolbox is found on the **Block Worktable**. With an **Applique Block** or **Motif** selected, choose the **DRAW** tab on the top ribbon, then choose **Drawing Tools**.

Pick

Click on the edge of a patch to select it. There are several options for selected patches in the palette.

Edit

Click on the edge of a patch to select it. Drag a node to reposition it. Adjust the handles to reshape curves. Double-click a node to delete it. Double-click a line/curve to add a new node.

Draw

Choose a drawing sub-tool. Each has its own capabilities. Drag your cursor on the block to draw with these tools.

Shapes

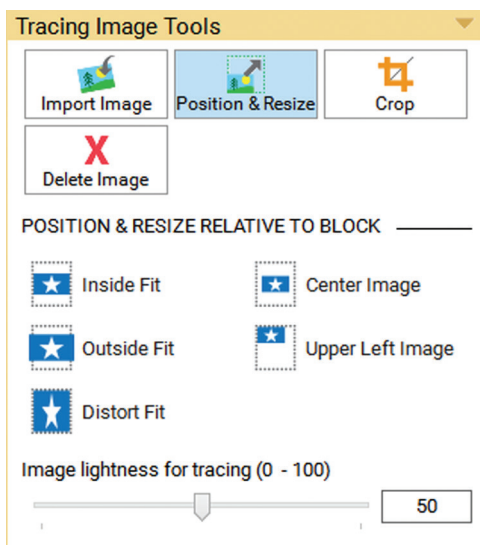
Choose a pre-defined shape, then drag your mouse on the block to place your shape. Use the PatchMaker shapes to create quick stars, flowers and scallops.

Ellipse

Drag an ellipse onto the block. Use the palette options to change the style of the ellipse, its shape and size.

Rectangle

Drag a rectangle onto the block. Use the palette options to change the style of the rectangle, its shape and size.



Tracing Image Tools

This toolbox is found on the **Block Worktable**. With any block style selected, choose the **DRAW** tab on the top ribbon, then choose **Tracing Image**.

Import Image

Import an image from your computer into EQ8. Place as a background image that can be used as a guide for tracing a new block. (You must go back to the DRAW tab to trace the block once the image is set.)

Position & Resize

Use these options to position the image in the block.

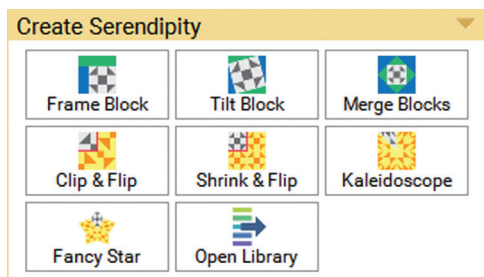
Crop

Crop out unwanted edges of the image.

Delete Image

Delete the current image on the worktable.

BLOCK WORKTABLE



Create Serendipity

This toolbox is found on the **Block Worktable**. Click the **NEW BLOCK** tab on the top ribbon, then choose **Create Serendipity**.

Frame Block

Puts a pre-designed frame around the selected Sketchbook block.

Tilt Block

Tilts the selected Sketchbook block at any angle from 0 to 90 degrees.

Merge Blocks

Combines the two selected Sketchbook blocks into one block. Note that the background block must meet specific requirements. See the online help.

Clip & Flip

Flips and rotates the upper-left quadrant of the selected Sketchbook block.

Shrink & Flip

Shrinks the selected Sketchbook block, then flips and rotates it into 4 different quadrants to create a new block.

Kaleidoscope

Turns the selected Sketchbook block into a kaleidoscope by cutting it 8 ways.

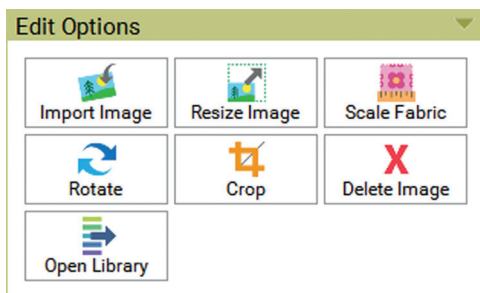
Fancy Star

Turns the selected Sketchbook block into a star with 5 to 8 points.

Open Library

Opens the Block Library window.

IMAGE WORKTABLE



Edit Options

This toolbox is found on the **Image Worktable**. Click the **IMAGE** tab on the top ribbon, then choose **Edit**.

Import Image

Imports an image from your computer into EQ8 to edit and add to your project.

Resize Image

Adjusts the image size and resolution.

Scale Fabric

Ensures the fabric image you have imported is at 100% scale, so what you see in your EQ quilt or block is what you'd see in your sewn quilt or block.

Rotate

Options to rotate, shear or straighten an image. The Straighten feature is very helpful for imported fabric images.

Crop

Removes unwanted edges of the image.

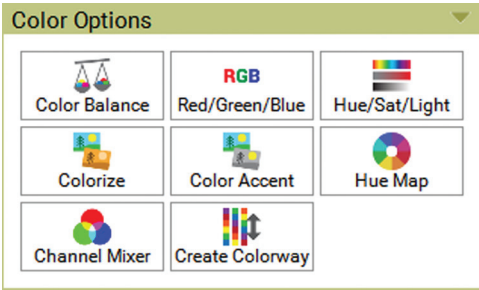
Delete Image

Deletes the current image on the worktable.

Open Library

Opens the Photo Library window.

IMAGE WORKTABLE



Color Options

This toolbox is found on the **Image Worktable**. Click the **IMAGE** tab on the top ribbon, then choose **Color**.

Color Balance

Automatically adjusts color levels in the image.

Red/Green/Blue

Changes the amount of red, green and blue in the image.

Hue/Sat/Light

Changes all three dimensions (hue, saturation and lightness) of the image's color values.

Colorize

Changes the overall color and intensity of the image.

Color Accent

Selects a hue or range of hues to emphasize or isolate while minimizing the hues in the rest of the image.

Hue Map

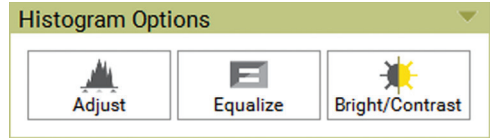
Adjusts specific hues in your image.

Channel Mixer

Applies creative color adjustments to an image.

Create Colorway

Creates various colorations of the same image.



Histogram Options

This toolbox is found on the **Image Worktable**. Click the **IMAGE** tab on the top ribbon, then choose **Histogram**.

Adjust

Changes the brightness and contrast of the image.

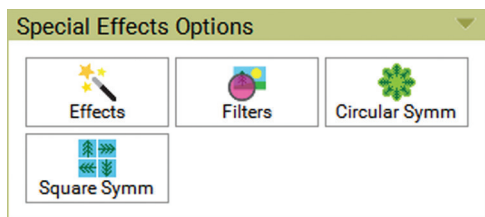
Equalize

Increases the contrast in an image.

Bright/Contrast

Applies overall and equal adjustments to all the pixels in an image.

IMAGE WORKTABLE



Special Effects Options

This toolbox is found on the **Image Worktable**. Click the **IMAGE** tab on the top ribbon, then choose **Special Effects**.

Effects

This option has over 45 different effects that can be applied to images, including Artistic, Noise, Blur and many more.

Filters

This option has 9 different filters that can be applied to images, including Sharp/Unsharp, and Edge Detection.

Circular Symm

Takes a pie-shaped petal of an image and turns it into a circular design similar to the patterns seen in kaleidoscopes.

Square Symm

Uses a square portion of the photo to create symmetries within a new 4-quadrant image.



Print

This toolbox is found on the **Image Worktable**. Click the **PRINT & EXPORT** tab on the top ribbon, then choose **Print**.

Photo Layout

Interactive layout for placing Sketchbook photos on the page in the best sizes and positions for printing. This helps utilize the space better, especially if printing onto inkjet fabric.

Print Setup

Opens the Print Setup dialog to adjust your print settings.

IMAGE WORKTABLE



Export

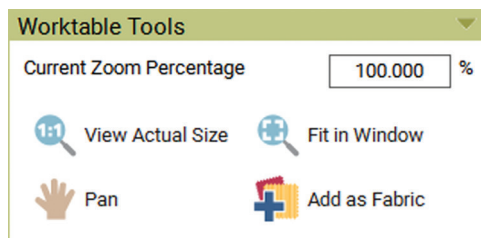
This toolbox is found on the **Image Worktable**. Click the **PRINT & EXPORT** tab on the top ribbon, then choose **Export**.

Image

Exports the image as a *.JPG, *.TIF, *.GIF, *.PNG or *.BMP file.

Selection

Exports an image as a *.BMP file of the selected area. Drag a box around a portion of your image to export only that selected portion.



Worktable Tools

This toolbox is always found in the palette on the **Image Worktable**.

View Actual Size

Displays the image at its actual size. The image may be smaller or larger than your screen can display.

Fit in Window

Zooms the image larger or smaller to fit the entire size of the window.

Pan

Grabs to move the image around on the screen.

Add as Fabric

Adds the current image as a fabric in your Sketchbook. This works best for fabric photos that you have imported and plan to use in your quilt design. After using this tool, you will find your image in the fabric palette on the Quilt and Block Worktables.

END-USER LICENSE AGREEMENT

Please read carefully.

EQ8, including without limitation the software's source code, object code, instructions, graphics, and other components (collectively the "Software"), is provided to you under license.

COPYRIGHT: The Software is copyrighted 1991-2019 by The Electric Quilt Company.

NOTICE OF RIGHTS: All rights reserved.

No part of this software or its documentation may be reproduced or transmitted in any form or by any means, electronically, photocopied, recorded, translated into a machine language, or otherwise, without the written permission of the publisher.

You may not sell or distribute collections or individual block designs from the EQ8 Block Library. You may not use EQ8 library blocks or other library designs in any commercial application, including software. For rights clearance, please contact The Electric Quilt Company by email customerservice@electricquilt.com or by phone 419-352-1134 Monday-Friday, 9:00am-4:30pm Eastern.

NOTICE OF TRADEMARKS: Windows® and Microsoft® are registered trademarks of Microsoft Corporation. Mac® is a registered trademark of Apple Inc. Electric Quilt® is a registered trademark of The Electric Quilt Company. Many titles used by manufacturers and sellers to distinguish their products are claimed as trademarks. Where The Electric Quilt Company was aware of these trademarks, the trademark symbol was printed beside the trademarked title or product name.

GRANT OF LICENSE: This Software is protected by United States Copyright law and by International Treaty. Any use of the Software in violation of these laws terminates the license and can be prosecuted. This Software is licensed, not sold.

The Electric Quilt Company grants to you a non-exclusive, non-transferable, single-user license to EQ8. By your installation and use of this Software you acknowledge that you have read this agreement, understand it, and agree to be bound by its terms and conditions.

You agree not to engage in, nor to permit, the decompilation, disassembly, attempt to discover the source code, or other reverse engineering of the Software.

You may not lend, lease, rent, sublicense, or otherwise distribute any portion of this Software. It is software piracy to do so and the licensee and others involved in the piracy can be prosecuted.

WARRANTY: The Software is licensed "as is" and without any express or implied warranties whatsoever. Because of the diversity of hardware and conditions under which this Software may be used, no warranty of fitness for a particular purpose is offered. The user must assume the entire risk of using the Software. Any liability of seller or manufacturer will be limited to product replacement or refund of purchase price.

The Electric Quilt Company does not guarantee or make any representations regarding the use or the results of use of the Software or any related content or information in terms of its correctness, accuracy, reliability, currentness, completeness or otherwise. The entire risk as to the results and performance of the Software or related content or information is assumed by you.

MY DOWNLOADS

Need to re-download EQ8? Log into your ElectricQuilt.com account, click on My Downloads, and click the file to start the download. See page 5 for details.

WINDOWS & MAC

Need EQ8 for both Windows and Mac? There's no need to purchase the full EQ8 again if you want to run it on a second platform. Go to the EQ website and search for the EQ8 Migration Kit in the search box. For a small fee, this download will give you the installation files for the second platform.

CONTACT EQ

The Electric Quilt Company
500 Lehman Ave, Suite 202
Bowling Green, OH 43402

Business Hours:

Monday-Friday, 9:00am-4:30pm ET

Support Phone and Email:

1-419-352-1134

TechSupport@ElectricQuilt.com

Sales Phone and Email:

1-800-356-4219

Sales@ElectricQuilt.com

General Email:

CustomerService@ElectricQuilt.com

Website and Live Chat:

<https://www.ElectricQuilt.com/>



Follow us on social media!

